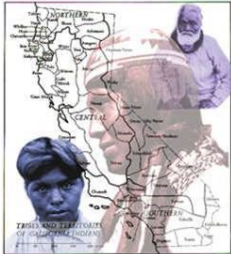


Tribal Transportation News



A Publication of the Western TTAP
Published by the National Indian Justice Center



Safety Steering Committee Renews Commitment to Safer Tribal Roads

By: Adam Larsen, FHWA Tribal Transportation Program



Transportation safety is a major problem on tribal lands. In 2013, the Centers for Disease Control identified motor vehicle injuries as the leading cause of death for American Indians and Alaska Natives aged 1-44. In many States fatal crash rates are several times over-represented among the American Indian populations compared to all other races. In the 4 years from 2010 to 2013, there were 1,721 deaths of Native Americans and Alaska Natives from roadway crashes reported in the Fatality Analysis Reporting System (FARS). Studies have shown that these alarming statistics are probably even more severe because they are based on information that is highly likely to be underreported.

FHWA's Tribal Transportation Program (TTP) is leading an effort to re-establish the Safety Management System (SMS) Steering Committee, a group comprising stakeholders from both Tribal and Federal Governments and the Tribal Technical Assistance Program. The purpose of the SMS Steering Committee is to identify strategic activities that will have a high probability of decreasing fatal and serious injury crashes in Indian

Country. Some of these activities will be implemented by the committee while others activities can only be implemented by encouraging individual tribes to take action.

In 2008, the SMS Steering Committee worked with tribal partners to develop a Strategic Highway Safety Plan (SHSP); an Implementation Plan was developed in 2011. The goal of the Implementation Plan was for tribal governments to develop Tribal Highway Safety Improvement Programs (HSIP).

The effort to reinvigorate the SMS Steering committee is focused on creating a team of stakeholders who will:

- Use a multi-disciplinary, data-driven approach to update the 2008 Strategic Highway Safety Plan (SHSP) for tribal lands to generally address transportation safety needs in Indian Country in coordination with other agencies and tribal governments.
- Update the 2011 Safety Management System (SMS) Implementation Plan.



Cherokee Nation used TTP funding for this project intended to improve traffic flow and reduced crashes and near misses experienced at this intersection, which provides access to the Cherokee Nation's Health Clinic, Head Start, and High School. Photo credit: Cherokee Nation.



Partnering with Oklahoma DOT, Cherokee Nation used funding from the Tribal Transportation Program (TTP) and a grant from the TTP Safety Fund to improve safety at the intersection of US-62 and Cherokee Street. Photo credit: Cherokee Nation.

(Continued on page 4)

NIJC STAFF

Joseph A. Myers, Executive Director
Jerry Burroni, Educational Specialist
Raquelle Myers, Staff Attorney
Nicole Lim, Staff Attorney
Carol Oliva, Development Officer
Margaret Browne, Training Coordinator
Barry Litchfield, Editor TTAP News
Carrie Brown, Western TTAP Safety Circuit Rider
Christy Garcia, Program Specialist
Dixie Myers, Fiscal Officer
Beverly Howell, Finance Manager
Cassandra Overton, Financial Coordinator
Doug Royer, Computer Systems Operations
Tom Litchfield, Website Development
Carrie Taylor, Admin. Assistant

Board of Directors

Judge William Johnson, President (*Umatilla*)
Judge William Thorne, Vice-President (*Pomo*)
Judge Michael Petoskey (*Ottawa*)
Judge John St. Clair (*Shoshone*)
Ted Quasula, Consultant (*Hualapai*)
Doug Nash, Attorney (*Nez Perce*)

5250 Aero Drive
Santa Rosa, CA 95403
Phone: (707) 579-5507, Fax: (707) 579-9019
E-Mail: nijc@aol.com
<http://www.nijc.org>

Western TTAP is administered by the NIJC. If you would like to submit an article or graphic (jpg or tiff format) for publication in Tribal Transportation News, please send a text file (PC format) to Barry Litchfield, TTAP Coordinator/Editor, barry@nijc.org, along with a cover email giving us permission to print your article. We appreciate your submissions!

The National Indian Justice Center is located in Santa Rosa, California. NIJC's building also houses the administrative offices of the California Indian Museum and Cultural Center, the Intertribal Court of California and the Regional Tribal Justice Center. Construction is currently underway for the California Indian Museum and Cultural Center, which will include a storytelling venue, Native plants garden, California Indian foods, a small Native village, audio-visual displays that highlight California Indian history and the contributions of California Indians, as well as Edward Curtis prints and traveling exhibits. If you are in the area, please come visit and tour the facilities.



Table of Contents

Safety Steering Committee Renews Commitment To Safer Tribal Roads..... 1
Western TTAP Staff Directory 2
Announcements 3
The Safety Edge..... 4
FLH Workshop Offers Hands-on Experience in Bridge Design 6
Arizona Bridge Replacement Wins Best Project Award 6
Every Day Counts (EDC)-4 Call for Projects..... 6
Utah DOT: ‘Get Your Head Out of Your Apps’ 7
Transportation Health Tool (THT) 7
Tribal GIS Transportation Route Center Line Data Model Now Open for Comments..... 8
Federal Transit Administration Tribal Transit Awards..... 8
Announcing the Roadway Departure Safety Workshop Series for Tribal Communities in California..... 9
Creating Safe Routes to School Programs in Tribal Communities in California..... 9
Timber Bridge Safety Inspections Improve with New Techniques and Equipment..... 10
California Department of Transportation..... 11
NTTC 2016 Save The Date 32

TRANSPORTATION RESOURCES

Recent Transportation Legislation 12
Transportation Event Calendar 13
Tribal Transportation Partners Directory 14
Tribal Transportation Resources 16
Tribal transportation Funding Resources 29

If you would like to join our TTAP Mailing List and subscribe to our quarterly publication of *Tribal Transportation News*, go to www.nijc.org/ttap.html and click on - *join our mailing list*. You can also call Barry Litchfield at (707) 579-5507 x 224.

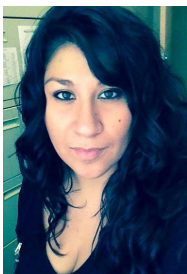
ANNOUNCEMENTS

Western TTAP Announces New Safety Circuit Rider Program

“Pesa tabeno, how mu? Nu Carrie Brown me nanea. Nu oodenowaetu . Good day, how are you all? My name is Carrie Brown. I am from Reno, NV.

I am pleased to be the new Tribal Safety Circuit Rider! I am an enrolled member of the Reno-Sparks Indian Colony based in Reno, NV and currently reside in Nixon, NV with my husband and daughter. I graduated from the University of Nevada, Las Vegas. I majored in Psychology and Anthropology with a focus on linguistics. I worked in the human services field for 5 years before moving onto Injury Prevention for 4 years. I am currently a Child Passenger Safety Technician, certified Tai Chi instructor, and indirect trainer for the Department of Homeland Security.

I am honored to serve as the new Tribal Safety Circuit Rider! You can reach me at cbrown@nijc.org”



The Western TTAP is proud to announce that we have hired Ms. Carrie Brown as the WTTAP Safety Circuit Rider (SCR).

She will be responsible for administering the Tribal SCR Program which is designed to provide safety-related information, training, and support to the Tribal transportation agencies responsible for roadway safety. While the primary focus is on tribal roads, the Tribal SCR Program Specialist will assist the WTTAP and their partners in improving road safety in Indian Country. The Tribal SCR Program can take many forms including technical assistance, training, and technology transfer.

The SCR program is funded by the Center for Disease Control (CDC) National Center for Injury Prevention and managed by the Federal Highway Administration Office of Technical Services (FHWA-OTS) – Technology Partnership Programs. The SCR is being pilot tested at three TTAP Centers (Northern Plains, Southern Plains, and Western). Traditionally, SCR Programs have focused on the Four E’s (Engineering, Education, Emergency Response, and Enforcement). The Tribal SCR Program will expand the role to include behavior modification approaches in traffic safety (i.e. child passenger safety, seat belt use, impaired driving prevention).

In order to make the Western TTAP Safety Circuit Rider program more effective, we would like to determine the priority transportation training and technical assistance needs for the tribes in California and Nevada. We are asking for your help in developing a comprehensive list of those needs by completing the [Tribal Safety Circuit Rider Program Tribal Transportation Needs Assessment](#).

To view and complete needs assessment go to: <https://www.surveymonkey.com/r/SCRNeedsAssessment>.

Federal Aviation Administration (FAA)

Small Unmanned Aircraft System (UAS) registry is now live and ready for UAS owners to use at www.faa.gov/uas/registration.

Registration is free for the first 30 days with a rebate, then \$5 after that.

During the registration process, each owner must provide his or her name, home address and e-mail address. When registration is complete, the web application will generate a Certificate of Aircraft Registration/Proof of Ownership including a unique identification number for the UAS owner, which must be marked on the aircraft.

Owners using the model aircraft for hobby or recreation will only have to register once and may use the same identification number for all of their model UAS. The registration is valid for three years.

All aircraft weighing more than 0.55 pounds (250 grams) and less than 55 pounds (approx. 25 kilograms), including payloads such as on-board cameras, must be registered.

Under this rule, owners who previously operated an unmanned aircraft exclusively as a model aircraft prior to December 21, 2015, must register no later than February 19, 2016. Owners of any other UAS purchased for use as a model aircraft after December 21, 2015 must register before the first flight outdoors. Owners may use either the paper-based process or the new streamlined, web-based system. Owners using the new streamlined web-based system must be at least 13 years old to register.

If help with registration is needed, email UAhelp@faa.gov.

Department of the Interior Bureau of Indian Affairs

Assistant Secretary – Indian Affairs Kevin K. Washburn announced that the Department of the Interior has accepted from the State of Washington the partial civil and criminal jurisdiction it held over the Confederated Tribes and Bands of the Yakama Nation. The state has held this authority over the Yakama Nation, a federally recognized tribe located in the southwestern portion of Washington, for more than half a century. To view the News Release go to: <http://www.indianaffairs.gov/cs/groups/public/documents/text/idc1-031964.pdf>

Caltrans Bike and Pedestrian Plan

Caltrans has begun the process of creating the State’s first Bicycle and Pedestrian Plan. They are seeking feedback and will be conducting public outreach over the next year. Caltrans has posted a public survey to provide input on their website here: www.cabikepedplan.org.

(Continued from page 1)

- Identify a budget and resources to fund the committee's further efforts.

The new SHSP for tribal lands will take a fresh look at the supporting data. Depending on the method used to define "crashes impacting tribal lands," the number of annual fatalities to be considered could be as high as about 3,100 in 2013.

The SMS Steering Committee will formalize its charter in late September 2015. The committee will meet quarterly, with additional subcommittee and task-related meetings held on an as-needed basis.

For more information on SMS Steering Committee activities, please contact:

Russell Garcia, Russell.Garcia@dot.gov, 202-366-9815 or Adam Larsen at Adam.Larsen@dot.gov, 360-619-7751.

Tribal Transportation Program Safety Fund

The SMS Committee had a significant role in the establishment of the Tribal Transportation Program Safety Fund (TTPSF), which is modeled after the Highway Safety Improvement Program in that it encourages each tribe to develop a Strategic Transportation Safety Plan similar to state SHSPs. Individual projects must be supported by a strategic planning process and by crash history (like the eligibility criteria for HSIP). Also, the TTPSF uses the eligible activities list from HSIP (23 USC 148).

Each year, the grant is funded at around \$8.5M under MAP-21. All federally recognized tribes identified on the list of "Indian Entities Recognized and Eligible to Receive Services from the Bureau of Indian Affairs" are eligible for grants under this program. In 2013 and 2014 the TTPSF received requests for funding that were more than 3.5 times the amount of available funding.

More information is available at:

<http://flh.fhwa.dot.gov/programs/ttp/safety/ttspf.htm>



The Safety Edge

From FHWA, Every Day Counts

Pavement edge drop-off on highways has been linked to many serious crashes, including fatal collisions. To mitigate vertical drop-offs, FHWA advocates installing the Safety EdgeSM on pavements during paving or resurfacing projects. This technology allows drivers who drift off highways to return to the pavement safely.



Roadway departures account for over half of all fatal crashes. Not all of these crashes involve speeders and drunk drivers. Some could have been easily prevented if a vertical pavement edge drop-off had not been present.

Many of these tragedies might have been prevented by a cutting-edge technology known as the Safety EdgeSM. This simple, inexpensive solution is a focus of the FHWA's *Every Day Counts* program.

Pavement Edge Drop-offs

Drop-offs occur when there are height differences between a paved road and the adjacent graded material. Conventional paving techniques result in vertical or nearly vertical pavement edges, which can cause safety concerns when they are exposed.

National crash data is lacking on edge drop-off issues, but the existing data is compelling. In Iowa, pavement edges may have contributed to as many as 18% of rural run-off road crashes on paved roads with unpaved shoulders during 2002-2004. In Missouri, that percentage was nearly 25%. These statistics were strong motivation for the FHWA's ground-breaking Safety EdgeSM initiative.

Why Vehicles Leave the Road

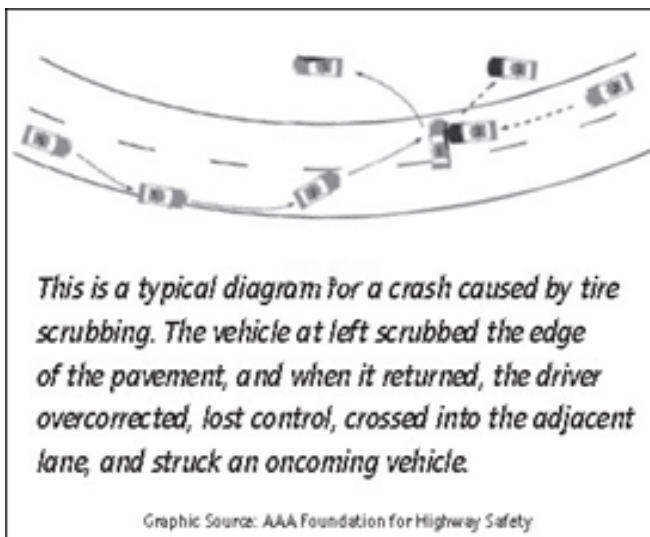
Drivers leave the paved road for many reasons. Some may need to avoid a drunk driver or a roadway obstruction. Others are drowsy or distracted by a phone call, a text message, a GPS device, or a passenger. It is

particularly easy to leave the paved road when visibility is low.

Returning to the paved road can be challenging when vertical edge drop-offs are present. A driver who doesn't slow down before attempting to steer back onto the pavement can easily lose control of the car. One State found that drop-off crashes are four times as likely to include a fatality than other types of crashes on similar roads.

The Safety EdgeSM Solution

The Safety EdgeSM is an uncomplicated and effective solution to mitigate pavement edge-related crashes. When done correctly, simply shaping the edge of the pavement to



30 degrees can eliminate the problem of vertical drop-off. Research has shown this "shape is considered conservative in that the transition from on-roadway surface to shoulder and back is so smooth it defies assignment of any degree of severity, except when the elevation change from pavement to shoulder causes a noticeable tilt in the vehicle."

The Safety EdgeSM provides a strong, durable transition for all vehicles that are particularly vulnerable, such as smaller, lighter cars or motorcycles. Even at relatively high speeds, vehicles can return to the paved road smoothly and easily.

As with conventional paving, the graded material adjacent to the Safety EdgeSM should be brought flush with the top of the pavement following paving. The Safety EdgeSM concept is that when drop-offs recur, they will not be vertical, but a shape that will not induce tire scrubbing.

Avoiding Tire Scrubbing

Without the Safety Edge, a vertical or near-vertical pavement edge can become exposed. Attempts to return to the road can create "tire scrubbing" as the tire rubs intensely against the vertical edge, causing friction between the wheel and the pavement.

If the driver overcompensates by steering too hard, the

vehicle can fishtail, swerve into another lane, or go off the road entirely. The vehicle may roll over or be thrown into oncoming traffic.

Inexperienced drivers are not the only victims of tire scrubbing. Smaller, lighter vehicles have a harder time climbing a steep pavement edge. At high speeds, the climb is particularly dangerous.

Whereas a vertical drop-off of 2.5 inches or greater has been shown to be problematic at speeds of 55-60 mph, drop-offs of up to 5 inches with the Safety EdgeSM are traversable at these speeds.

Added Benefits to the Safety EdgeSM

- The Safety EdgeSM also improves density at the pavement edge, which makes the pavement more durable. Less frequent road maintenance may be needed as edge raveling is reduced.
- The Safety EdgeSM is also easy to install. A commercially available shoe can be mounted on asphalt resurfacing equipment. An attachment acts as a screed extension. As the asphalt is extruded, it confines the asphalt into the desired 30 degree shape. Although generic devices that provide a 30-degree angled shape can also be used, they typically only cut the pavement into the correct angle, but do not consolidate the asphalt. This leaves the edge more open to breaking off.
- The Safety EdgeSM is inexpensive to install. Typically less than 1% additional asphalt is required, since the Safety EdgeSM technology compacts the loose asphalt that would otherwise crumble.
- The Safety EdgeSM is also recommended for concrete pavements where the edge is adjacent to an unpaved surface. This may call for other considerations, including an increase in materials.

The Safety EdgeSM Challenge

The Safety EdgeSM is a proven solution that requires minimal cost and time. By including the Safety EdgeSM detail while paving, this countermeasure can be implemented system-wide at a very low cost. FHWA's goal is to accelerate the implementation of the Safety EdgeSM technology, so that more lives can be saved.

The FHWA has joined with state and local agencies in 20 states to sponsor or initiate project demonstrations installing this technology. Working together with State partners, contractors, equipment manufacturers, and the industry on this 21st century initiative, we can prevent the tragedy of pavement edge drop-offs.





FLH Workshop Offers Hands-On Experience in Bridge Design

From EDC NEWS

Technical staff from tribal agencies and the Bureau of Indian Affairs learned the skills to design geosynthetic reinforced soil-integrated bridge systems at a hands-on workshop in Lakewood, Colorado. FHWA's Office of Federal Lands Highway (FLH) sponsored the workshop, held November 17 through 19. Participants learned how to identify and collect key hydraulic, geotechnical, structural and material information, then used a spreadsheet tool to design a GRS-IBS for a tribal project.

Arizona Bridge Replacement Wins Best Project Award

From EDC NEWS

The Sacaton Bridge project in Arizona received an Engineering News-Record Regional Best Projects 2015 Award in the southwest highway/bridges category. The Gila River Indian Community Department of Transportation used the construction manager/general contractor delivery method, prefabricated bridge elements and slide-in bridge construction on the project. Using CM/GC created a collaborative environment that reduced construction time from an originally proposed six-month closure to 11 days. Despite flooding during construction, the team delivered the project under budget and without change orders.

Every Day Counts (EDC)-4 Call For Projects

From EDC NEWS

Thank you for your leadership and support of the Every Day Counts (EDC) initiative. It is hard to believe that we are now almost half way through the third round of EDC. Through our partnership, we continue to make significant progress in accelerating the deployment of EDC

innovations and bringing greater efficiency to project delivery through technology and collaboration. The inclusion of EDC in the recently enacted FAST Act was recognition by the Congress that we're having an impact.

Since EDC's inception, every state transportation agency has used eight or more of the innovations promoted under the initiative, and some have adopted over twenty. Forty-nine State Transportation Innovation Councils (STICs) have been established to date, creating a national network to spread the word and support widespread deployment of innovation across the nation. We've also seen the successful use of STIC Incentive and Accelerated Innovation Deployment (AID) Demonstration program resources. In fiscal year 2015, a total of \$4.2 million was awarded to 44 STICs to fund activities making innovations standard practice within their respective state. Additionally, we made 45 awards totaling \$33.8 million in AID Demonstration incentive funding to deploy innovations throughout the country. In short, we are seeing the impact innovation can have in saving money, saving time, and saving lives—exactly the results we said were possible if we made innovation a standard industry practice.

As 2015 draws to a close and we continue our efforts to deploy innovations through EDC-3 and other initiatives, I would like your input in preparing for the next round of EDC. Specifically, I need your ideas about proven innovations, something you and your members are in an excellent position to provide. These market-ready technologies will ensure we continue to deliver transportation to the American people better, faster, and smarter and continue to strengthen the culture of innovation throughout the highway community.

A formal [Request for Information](https://www.federalregister.gov/articles/2015/12/10/2015-31112/every-day-counts-initiative-request-for-information) published in the Federal Register provides instructions for submitting suggestions for EDC-4. View the request at: <https://www.federalregister.gov/articles/2015/12/10/2015-31112/every-day-counts-initiative-request-for-information>

Please share the link with your members. We are asking for their input by January 31, 2016. We will compile the suggestions and I look forward to working with AASHTO and you in selecting the next round of EDC innovations. Please contact me if you have any questions.

Thank you for your leadership and continued commitment to making innovation a standard practice. Together we are creating an exciting future that promises greater efficiency in project delivery and greater value for the American people.

Utah DOT: 'Get your head out of your apps'

Better Roads, Bobby Atkinson, November 12, 2015



That's the playfully blunt message drivers in Utah got on Monday on electric highway signs in the state this week, according to KSL in Salt Lake City.

Distracted driving is one of the leading causes of highway deaths in the era of smartphones, and the Utah Department of Transportation isn't holding back when it tells people they need to concentrate on the road and keep off their phones while driving.

UDOT first got into the creative sign game back on Memorial Day when it decided to use the electric signs to display unconventional messages warning drivers to be safe for the state's 100 deadliest days for drivers. The department decided to keep the creative signs going each Monday with a campaign called Message Monday.

KSL reports the latest sign was said to be a bit controversial due to the pun on the common vulgar phrase, but it's not the first time that particular phrasing has been used – the Iowa Department of Transportation used the phrase on signs a year ago.

"If you're trying to make an impact, there may be a few people that don't agree. We're OK with that because the overall goal here is to get people talking," UDOT spokesman John Gleason said. "We take a lighthearted approach, but make no mistake, this is a serious issue. People are dying on our roads, and we want to do something to get people's attention, to get people talking."

Gleason went on to say that the department isn't trying to offend, but to try to get people talking about the message. And to that end, the latest sign has to be considered a success.

UDOT said Message Monday is supposed to remind drivers of the following:

- Drive alert. Make sure you've had enough sleep before hitting the road.
- Give your road full undivided attention. Put away and distractions, and ask that passengers help you to keep your attention on the road.
- Never drive impaired-this includes alcohol, illicit drugs, and even prescription or over-the-counter medications. Impaired driving is anything that inhibits your ability to drive safely.
- Avoid aggressive driving. Aggressive driving means

operating a vehicle in a way the endangers, or is likely to endanger people, or property.

- Buckle up– no matter how short your trip. About half of Utah's vehicle fatalities this year were not wearing seat belts at the time of their crash.

Transportation Health Tool (THT)

What is the Transportation Health Tool?

The Transportation Health Tool, is an interactive, online tool practitioners can use to examine the health impacts of transportation systems. Understanding the intersection between transportation and health through the THT indicator profiles, both sectors will have the opportunity to collaborate, establish common goals, identify win-win opportunities and leverage resources to improve health outcomes.

How does it work?

The THT uses data on 14 transportation and health indicators to measure how the transportation environment affects health with respect to safety, active transportation, air quality, equity and connectivity to destinations. The THT provides transportation officials and policymakers with recommendations on how to improve their health outcomes using the proposed strategies, interventions and policies in their own community.

Who is it for?

We encourage the following audiences to use the THT:

- Transportation and health decision-makers at the state, regional and metropolitan planning organizational level.
- Local transportation and health officials and practitioners.
- State and local policy makers.
- Health and active transportation advocacy groups.

Where do I start?

The indicator data provide direction to the THT users by demonstrating the low- and high-performing indicators for a state, metropolitan statistical area or urbanized area level, and offer strategies to improve health outcomes. Check how your area scores now!

More about the THT

The THT demonstrates how the transportation and health sectors intersect, and through its incorporation into transportation decision-making process will strengthen the relationship between the transportation and health sectors. Through years of collaboration and innovation, the USDOT and CDC with support from APHA created a tool accessible to state and regional practitioners that will impact health for generations to come. To visit the website go to:

<https://www.transportation.gov/transportation-health-tool>

Tribal GIS Transportation Route Center Line Data Model Now Open for Comments

In 2014 the National Tribal Geographic Information Support Center (NTGISC) in cooperation with the Bureau of Indian Affairs Department of Transportation (BIADOT) announced a alpha GIS Pilot Project as the first in a series of pilot programs targeted to assist with researching and developing standardized geospatial data structures as it pertains to transportation infrastructure. A pilot Project is a small scale preliminary study conducted in order to evaluate feasibility, time, cost, adverse events, and effect size in an attempt to predict an appropriate sample size and improve upon the study design prior to performance of a full-scale research project.

To support the MOU and associated pilot projects, a transportation working group has been established under NTGISC. A working group is a collection of individuals that come together as a group to achieve a stated objective(s) in which the group will study, report, and make recommendations based on its findings.

NTGISC recognizes the GIS advancements Tribes have developed to manage their transportation system, beyond which is required and utilized in the Road Inventory Field Data System (RIFDS) module. The objectives of this alpha GIS Pilot Project are to:

- Gather Available data under a singular point of contact and create a “working environment” for pilot project purposes
- Establish criteria or standards that are compatible with new version of RIFDS
- Begin the preparation of “preliminary atlas maps”
- Determine short and long term use of spatial environment and application towards transportation programs (i.e. Road Maintenance and asset management programs)

The pilot project is not an official data collection request for BIADOT and will not be used for any official purposes within BIADOT. This is a voluntary data collection request to assist the working group to identify the best data structure elements and to develop recommended standardized data structure for use with BIADOT and Tribes.

The NTGISC (Tribal GIS) transportation workgroup has opened the draft standardized route centerline dataset for comments. The route centerline dataset is at the center of an ongoing effort to develop a full tribal transportation ArcGIS data model over time. At this time, the workgroup is asking for tribal and BIA staff involved in transportation programs to review the draft data model documentation and geodatabase. The documentation and geodatabase are available for download from the members section of the Tribal GIS web-

site under the transportation workgroup section. If there are staff in your program that currently do not have a login for the Tribal GIS website have them complete a new membership form. Once the form has been received their account will be set up and they will be able to access the files.

You can access the transportation workgroup page by logging into the Tribal GIS website at:

<http://www.tribalgis.com>.

Once you are logged in, in the lower left corner click the graphic for the transportation workgroup and you will have access to the downloads and feedback forum. If someone needs access but does not have a login simply fill out a new membership application available at the following link:

http://www.tribalgis.com/index.php?option=com_content&view=article&id=71.

Please keep in mind this is only a draft and the final version will likely have changes, so any early adopters of this new standard may have to make changes once the final version is released. We are asking that all comments be posted within designated feedback forum, a link has been provided on the transportation workgroup page. In addition to posting your feedback to the forum, you may also email comments to gcouch@tribalgis.com. We are asking that all comments be submitted by February 1st so that they can be reviewed by the workgroup for inclusion in the final version of the data model.

Reprinted with the permission of the National Tribal Geographic Information Support Center (NTGISC).

www.tribalgis.com

Federal Transit Administration Tribal Transit Awards

The U.S. Department of Transportation’s Federal Transit Administration (FTA) announced the award of approximately \$10 million to help American Indian and Alaska Native tribal governments initiate, improve and enhance transit service on Tribal Lands. Congratulations to the following awardees in the WTTAP Region.

California Tribes receiving awards:

- Blue Lake Rancheria - \$15,622
- Morongo Band of Mission Indians - \$212,333
- North Fork Rancheria of Mono Indians - \$171,949
- Reservation Transportation Authority (Riverside County) - \$216,833
- Reservation Transportation Authority (Santa Barbara County) - \$25,000
- Yurok Tribe of the Yurok Reservation - \$121,500

Nevada Tribes receiving awards

- Te-Moak Tribe of Western Shoshone - \$300,000
- Yerington Paiute Tribe - \$125,604

Announcing the Roadway Departure Safety Workshop Series for Tribal Communities in California

A “roadway departure crash” is defined as a “non-intersection crash which occurs after a vehicle crosses an edge line or a center line, or otherwise leaves the traveled way.”

Many behavioral, environmental, and roadway infrastructure factors contribute to roadway departure crashes. We believe that California tribal communities experience a large number of such events but data about the contributing factors is lacking. As data becomes available to substantiate the number of collisions and crash factors on and near tribal roadways, it is important for tribes to be able to know the resources that are available to them to help them compete for funding and to select and implement safety measures that can be initiated quickly, cost-effectively and in alignment with state and national transportation safety initiatives.

The Roadway Departure Safety Workshop Series is designed for tribal leaders, transportation personnel and community members who will learn about the causes of roadway departure crashes and the use of High Friction Surface Treatments, Safety Edge and other proven countermeasures and initiatives for reducing roadway departure crashes. The Workshops will include presentations on the Transportation Injury Mapping System (TIMS), a web-based tool the California Department of Transportation (CalTrans) has implemented within the Safe Transportation Research and Education Center at the University of California at Berkeley (SafeTREC) to help local agencies prepare their own analysis of high crash corridors, make proactive assessments of low-cost systemic countermeasures and apply for Highway Safety Improvement Program (HSIP) funds.

This workshop is funded by the FHWA - Accelerating Safety Activities Program and coordinated by the Western TTAP administered by the National Indian Justice Center.

To view all the materials from the November 2015 workshop go to: <http://www.nijc.org/pdfs/TTAP/Safety%20Circuit%20Rider/RDSParticipantMaterialsCombined.pdf>

Visit the Federal Highway Administration (FHWA) website at: http://safety.fhwa.dot.gov/roadway_dept/ to view the Roadway Departure Strategic Plan and to view the new Roadway Departures Crash Emphasis Areas brochure.

Creating Safe Routes to School Programs in Tribal Communities in California

*Although California is recognized as a leader in the Safe Routes to School (SRTS) movement, many Native American tribes in California have not benefitted from the public health, safety, and environmental outcomes that SRTS programs are celebrating throughout California. California’s Active Transportation Program (ATP) provides the primary source of funding for SRTS infrastructure and non-infrastructure projects in the State. With the recent announcement of Cycle 2 ATP awardees, there are now three tribes that have been awarded funding for SRTS projects – an exciting shift after several years of this unique funding opportunity not reaching Indian Country. To that end, the Active Transportation Safety Program (ATSP), a part of Caltrans’ Active Transportation Resource Center, is pleased to offer *Creating Safe Routes to School Programs in Tribal Communities in California*. This document provides education and resources for California’s tribal communities interested in creating a SRTS program and applying for funding.*

Creating Safe Routes to School Programs in Tribal Communities in California acknowledges the many challenges to both designing an active transportation program as well as applying for funding for one. Although the Guide is primarily focused on non-infrastructure SRTS programs and activities, it is a useful reference for anyone developing an application for ATP funding or beginning to develop an active transportation program on tribal land. Topics addressed in the Guide include: steps to addressing some of the challenges to developing a SRTS project including gathering data and conducting community outreach; an overview of SRTS program activities and examples of activities that have been conducted in Tribal communities; and strategies for developing a SRTS plan. One of the first successfully-funded tribal award applications is profiled to underscore the importance of early planning efforts and highlight some of the elements that made the application competitive.

ATSP will host a webinar in January to share components of the Guide and give participants an opportunity to hear from a successful tribal ATP awardee. Please look out for more details about the webinar including registration information in the coming weeks.

To access the Guide, please visit *Creating Safe Routes to School Programs in Tribal Communities in California* on ATSP’s website at: http://www.catc.ca.gov/programs/ATP.htm_or, View the guide at: <http://www.casaferoutestoschool.org/?s=tribes>

If you have any questions, please contact Justine Hearn at justine.hearn@cdph.ca.gov.

Timber Bridge Safety Inspections Improve with New Techniques and Equipment



Photos: Brian Brashaw

Timber bridges are an important part of the U.S. roadway system, especially in rural areas: more than 50,000 bridges in the U.S. and more than 1,700 Minnesota bridges have wood or timber superstructures, while countless more have timber decking or substructure elements. In a recently completed project, researchers identified new advanced inspection techniques and equipment to help local agency inspectors evaluate their timber bridges. They also developed implementation strategies for the techniques, including training sessions across Minnesota.

“Current bridge inspection procedures are mostly limited to visual inspection of the wood components, along with ‘sounding’ with a hammer and coring to confirm suspected damage areas,” says Brian Brashaw, director of the Wood Materials and Manufacturing Program at University of Minnesota Duluth’s Natural Resources Research Institute (NRRI). “These techniques have generally been adequate for advanced decay detection, but they are not adequate when the damage is in the early stages or is located internally.”

To address these challenges, a team led by NRRI researchers identified advanced inspection technologies for timber bridges that could be used effectively in Minnesota. These technologies included moisture meters to identify areas susceptible to timber decay, stress wave timing to locate and define areas of decay non-invasively, and resistance microdrilling to confirm and quantify bridge element decay.

“When used by experienced inspectors, this equipment offers the potential to locate and quantify the extent of de-

cay that is present in bridge elements, often before it reaches an advanced stage,” Brashaw says.

The project also included several activities to put the research findings into practice. The team developed standard inspection protocols, integrated the results into MnDOT’s bridge data management software, developed a new timber bridge inspection manual, and held outreach training across Minnesota for more than 150 inspectors and engineers.

Finally, the research team completed an economic assessment on the use of advanced inspection technologies for timber bridges. “We quantified the possible extension of the timber bridge life cycle before replacing the bridge or posting weight restrictions, and we found that using these bridge inspection techniques and equipment does provide a positive return on investment,” Brashaw says.

“The project helped put advanced inspection tools in the hands of our inspectors,” adds Bruce Harbargen, the county engineer in Beltrami County. “The tools are now available, and the inspectors have the knowledge on how to use them. Timber bridge inspection has been significantly improved.”

MnDOT has purchased three sets of the recommended inspection equipment for use by bridge owners to conduct timber bridge inspections. NRRI will manage the equipment use and provide support to inspectors across Minnesota.

The Minnesota Local Road Research Board and the Iowa Highway Research Board provided financial support for the project. The research team included the Minnesota Department of Transportation Offices of Bridges and Structures and State Aid for Local Transportation, Iowa State

University's Bridge Engineering Center, the USDA Forest Products Laboratory, and HDR, Inc.



A stress wave timer locates bad areas on a bridge by using robes to measure the time it takes for sound to travel through the material. A decayed piling will have a time that is more than double that of a sound piling.

Photos: Brian Brashaw



A resistance microdrill determines how much good wood is left in a piling or timber element by drilling a bit into the wood and measuring the resistance.

The word from the field

“This new inspection equipment can really help local agency inspectors evaluate timber bridges. Goodhue County inspectors found two questionable structures during their routine inspections last fall, and asked that we have the structures analyzed by a consultant because the inspectors were unsure of the integrity of the timber piles based on their exterior condition. Instead, I contacted Brian, and he lent us a stress wave timer and a resistance drill. With these two tools our inspectors were able to ascertain the lack of decay inside the piling. This alleviated their concerns about the load-carrying capacity of the piles, thus saving us the cost of hiring a consultant to perform the structural analysis.” —Greg Isakson,

Re-printed with the permission of the Minnesota LTAP, University of Minnesota, Center for Transportation Studies.

California Department of Transportation

The California Department of Transportation (Caltrans) is pleased to announce a series of regional transportation safety summits in February and April 2016 to guide the implementation of the California Strategic Highway Safety Plan (SHSP). The SHSP is a statewide, coordinated safety plan that provides a comprehensive framework for reducing fatalities and severe injuries on all public roads. This document guides the State's roadway safety programs and affects how safety funds are used.

Because California is a large and diverse state, traffic safety issues tend to vary by region. Successfully addressing these issues requires collaboration and networking among tribal, state, regional, and local governments. The summits will consist of workgroup discussions focusing on collaboration, lessons learned, and effective countermeasures. At the regional summits, participants will learn about:

- Region-specific safety issues and collision data;
- Safety activities already underway;
- Funding opportunities available for safety planning, infrastructure, and non-infrastructure projects, and
- Safety resources available to help Tribes realize their traffic safety goals.

The updated SHSP was developed through outreach efforts conducted during 2014 and 2015. Thanks to input from tribal governments, the SHSP includes an overarching strategy to “institutionalize coordination of resources and strategic partnerships among tribal governments, Challenge Areas, local and county governments, law enforcement, and the Native American Advisory Committee (NAAC) with the goal of improving transportation safety in Indian country.” Through this strategy, the SHSP specifically identifies improving tribal government crash data and providing technical assistance to tribal governments as high priority goals.

Dates for the regional summits are:

- February 23, 2016 (Fresno, CA)
- February 24, 2016 (Los Angeles, CA)
- February 25, 2016 (San Diego, CA)
- April 5, 2016 (Redding, CA)
- April 7, 2016 (Sacramento, Ca)
- April 8, 2016 (Oakland, CA)

To register for the Summits, please visit: <http://www.dot.ca.gov/hq/traffops/shsp/tribal.html>

For more information on the SHSP and the Regional Summits, tribal implementation, and the SHSP Update, please visit: <http://www.dot.ca.gov/hq/traffops/shsp/>. You may also contact Gretchen Chavez for additional information (gretchen.chavez@dot.ca.gov or (916) 654-6101).

TRANSPORTATION LEGISLATION

This information is provided expressly for educational purposes. The Western TTAP hopes to inform and educate tribal communities about legislation that may impact California and Nevada tribal communities and their tribal transportation programs. The following legislation was current at the time of publication. Legislation may change or be repealed. For further information, please check the status of the legislation at the respective website sources noted below.

Due to the overwhelming number of pending transportation related bills in the California, Nevada, and Federal Legislatures we have created a downloadable file on the NIJC Website that lists each bill, the sponsor, the status, and a brief summary. To view and download the file go to: http://www.nijc.org/ttap_legislation.html

STATE LEGISLATION



CALIFORNIA LEGISLATION

(For more information, go to <http://www.leginfo.ca.gov/bilinfo.html>)

New Laws Report 2010-2015

A list of all bills enacted in a calendar year during the Regular Session of the Legislature, unless otherwise noted.

To view the report go to: <http://www.leginfo.ca.gov/NewLaws.html>

The 2015-2016 Legislative Session convened on January 4, 2016



NEVADA LEGISLATION

(For more information, go to <http://www.leg.state.nv.us/Session/>)

The 78th (2015) Session of the Nevada Legislature adjourned *sine die* on June 1, 2015. The legislature is now in the interim period between legislative sessions.

78th (2015) Session: All Bills that Became Law

To visit the website go to: <http://www.leg.state.nv.us/Session/78th2015/Reports/AllBillsThatBecameLaw.cfm>

FEDERAL LEGISLATION



(For more information go to: <https://www.congress.gov/>)

Browse Public Laws 114th Congress (2014-2015) and prior congressional sessions go to:

<http://thomas.loc.gov/home/LegislativeData.php?&n=PublicLaws&c=114>

The 114th 2nd session of Congress (2015-2017).

The House convened on January 5, 2016.

The Senate convened on January 11, 2016.

ANNOUNCEMENTS

On December 4th, President Obama signed into law a five-year surface transportation bill, the Fixing America's Surface Transportation (FAST) Act, H.R. 22, which renews transportation funding programs. The FAST Act is the longest transportation bill Congress has passed since 2005, and authorizes \$225 billion for highways, \$61 billion for public transit, \$10 billion for Amtrak, and \$5 billion for highway safety programs.

On November 17, 2015, the House of Representatives passed the Tribal Labor Sovereignty Act - H.R. 511 - by a vote of 249 to 177. Please reach out to those members of your state delegation who voted for Tribal Sovereignty and thank them for their yes vote!

The Tribal Labor Sovereignty Act is a simple amendment to the National Labor Relations Act to include tribal governments in the same exempt category as all other governments. Tribes are simply seeking parity as governments and the right to regulate labor issues on terms that protect the tribal government.

H.R. 511 will now be sent to the Senate for consideration. We are urging all tribal leaders to reach out to your Senate delegation and ask them for their support of the Tribal Labor Sovereignty Act!

The Department of the Interior's Bureau of Indian Affairs has extended the effective date of its rights-of-way final rule by 90 days. The extension provides grantees, potential grantees, landowners and BIA personnel with more time to review the final rule and to adequately prepare for its implementation. The updated rule streamlines the process for obtaining the Bureau's approval to ensure consistency with recently updated leasing regulations, increases the flexibility in compensation and valuations, and supports landowner decisions regarding the use of their land. The new rule will now be effective March 22, 2016.

TRANSPORTATION EVENTS

Please visit the **National Indian Justice Center** web site to view more upcoming transportation events. go to: http://www.nijc.org/ttap_calendar.html

JANUARY 2016

January 10-14
TRB 95th Annual Meeting
Walter E. Washington Convention Center
Washington, DC
For more information go to:
<http://www.trb.org/AnnualMeeting/AnnualMeeting.aspx>

January 29-February 2
ATSSA 46th Annual Convention & Traffic Expo
Ernest N. Morial Convention Center
New Orleans, LA
For more information got to:
<http://expo.atssa.com/>

FEBRUARY 2016

February 23-26
Asphalt Emulsion Manufacturers Association, the Asphalt Recycling & Reclaiming Association and the International Slurry Surfacing Association 2016 Annual Meeting
Hyatt Regency Coconut Point Resort & Spa
Bonita Springs, FL
For more information go to:
http://ppralliance.org/Docs/2016AnnualMeeting/AAIAM2016_Prelim_Reg.pdf

MARCH 2016

March 8-11
ESRI Developer Summit
Palm Springs Convention Center
Palm Springs, CA
For more information go to:
http://www.esri.com/events/devsummit?utm_source=esri&utm_medium=email&utm_term=130805&utm_content=button&utm_campaign=dev_summit_2016

March 22-24
FTA: 11th Annual Drug and Alcohol Program National Conference
Hyatt Regency Sacramento
Sacramento, CA
For more information go to:
<https://transit-safety.fta.dot.gov/DrugAndAlcohol/Training/NatConf/2016/>

March 22-24
World of Asphalt 2016 Show & Conference
Music City Center
Nashville, TN
For more information go to:
http://www.worldofasphalt.com/?utm_source=Randall-Reilly&utm_medium=Sponsor&utm_campaign=WorldofAsphalt

March 28-31
CALACT Spring Conference and Expo
Hilton LaJolla Torrey Pines,
LaJolla, CA
For more information go to:
<https://www.calact.org/assets/PROSPECTUS%20CalACT%20Spring%20Conference%2016.pdf>

APRIL 2016

April 3-5
Lifesavers National Conference on Highway Safety Priorities
Long Beach Convention Center
Long Beach, CA
For more information go to:
<http://lifesaversconference.org/>

April 4-7
Safe Routes to School National Conference
Hilton Downtown Columbus
Columbus, OH
For more information go to:
<http://saferoutesconference.org/>

April 24-28
National Association of County Engineers (NACE) Annual Meeting/ Management and Technical Conference
Greater Tacoma Convention Center
Tacoma, WA

For more information go to:
<http://www.countyengineers.org/events/NACE2016/Pages/NACE%202016.aspx>

April 25-27
2016 International Conference on Winter Maintenance and Surface Transportation Weather
Fort Collins Marriott
Fort Collins, CO
For more information go to:
winter-maintenance-and-surface-transportation-weather/event-summary68f0128fa8f541a7a72894d622be6b02.aspx

MAY 2016

May 22-27
2016 Community Transportation (CTAA) EXPO
Oregon Convention Center
Portland, OR
For more information go to:
<http://web1.ctaa.org/webmodules/webarticles/anmviewer.aspx?a=4300&z=5>

JUNE 2016

June 13-15
2016 National Rural Transportation Conference
The Read House Hotel
Chattanooga, TN
For more information go to:
<http://www.nado.org/events/rpo2016/>

June 27-July 1
ESRI User Conference
San Diego Convention Center
San Diego, CA
For more information go to:
http://www.esri.com/events/user-conference?utm_source=esri&utm_medium=email&utm_term=148703&utm_campaign=uc_2016



TRIBAL TRANSPORTATION PARTNERS DIRECTORY

FEDERAL



Federal Highway Administration

United States Department of Transportation
1200 New Jersey Ave, SE
Washington, DC 20590

<http://www.fhwa.dot.gov/index.html>

Federal Highway Administration (FHWA) is charged with the broad responsibility of ensuring that America's roads and highways continue to be the safest and most technologically up-to-date. Although State, local, and tribal governments own most of the Nation's highways, FHWA provides financial and technical support to them for constructing, improving, and preserving America's highway system.

Central Federal Lands Highway Division

Federal Highway Administration
12300 West Dakota Ave.
Lakewood, CO 80228
(720) 963-3500

<http://www.cflhd.gov/index.cfm>

The Central Federal Lands Highway Division (CFLHD) operates as part of the Federal Lands Highway Program, serving the needs of all central states. CFLHD actively administers the surveying, designing and constructing of forest highway system roads, parkways and park roads, Indian reservation roads, defense access roads, and other Federal lands roads. CFLHD also provides training, technology, deployment, engineering services, and products to other customers.



Office of Federal Lands Highway

Federal Highway Administration
1200 New Jersey Avenue, SE
Washington, DC 20590
(202) 366-9494

<http://flh.fhwa.dot.gov/>

The Office of Federal Lands Highway (FLH) provides program stewardship and transportation engineering services for planning, design, construction, and rehabilitation of the highways and bridges that provide access to and through federally owned lands.

The primary purpose of the FLHP is to provide financial resources and technical assistance for a coordinated program of public roads that service the transportation needs of Federal and Indian lands.



Federal Transit Administration

1200 New Jersey Avenue, SE
4th & 5th Floors East Building
Washington, DC 20590

<http://www.fta.dot.gov/>

FTA Region 9 Offices

Federal Transit Administration
201 Mission Street Suite 1650
San Francisco, CA 94105
(415) 744-3133

<http://www.fta.dot.gov/about/region9.html>

Federal Transit Administration (FTA) is one of 10 modal administrations within the U.S. Department of Transportation. Headed by an Administrator who is appointed by the President of the United States, FTA administers federal funding to support a variety of locally planned, constructed, and operated public transportation systems throughout the U.S., including buses, subways, light rail, commuter rail, streetcars, monorail, passenger ferry boats, inclined railways, and people movers.

Rural Transit Assistance Program (RTAP)

The mission is to address the needs of rural, small urban and tribal transit operators across the nation.

Union Station Business Center
Ten G Street NE, Suite 710
Washington, DC 20002

Main: 202-248-5043

Fax: 202-289-6539

<http://www.nationalrtap.org/>

TRIBAL TRANSPORTATION PARTNERS DIRECTORY

National Local Technical Assistance Program Association (NLTAPA)

A not-for-profit organization representing and serving the 58 LTAP and TTAP Member-Centers in the United States and Puerto Rico. All staff of Member-Centers are entitled to Association services and opportunities to Serve. www.nltapa.org

Bureau Of Indian Affairs

There are millions of acres of land held in trust by the United States for American Indians, Indian tribes, and Alaska Natives. There are 566 federal recognized tribal governments in the United States. Developing forestlands, leasing assets on these lands, directing agricultural programs, protecting water and land rights, developing and maintaining infrastructure and economic development are all part of the agency's responsibility. In addition, the Bureau of Indian Affairs provides education services to approximately 48,000 Indian students.

Bureau of Indian Affairs

1849 C Street, N.W.
Washington DC 20240
(202) 208-7163
www.bia.gov



Pacific Regional Office

Bureau of Indian Affairs
2800 Cottage Way
Sacramento, CA 95825
(916) 978-6000

Western Regional Office

Bureau of Indian Affairs
400 N. 5th Street, 2 AZ Center, 12th Floor
Phoenix, AZ 85004
(602) 379-6600

CALIFORNIA



California Department of Transportation

Division of Transportation Planning, Native American Liaison Branch
1120 N Street
Sacramento, CA 95814
(916) 653-3175
<http://www.dot.ca.gov/hq/tpp/offices/orip/na/index.html>

The Native American Liaison Branch was created in 1999 in the Department of Transportation to serve as a liaison between the Department, federal, state, local, and

regional transportation agencies to establish and maintain government to government working relationships with Tribal Governments throughout California.

California Department of Transportation Division of Local Assistance

<http://www.dot.ca.gov/hq/LocalPrograms/index.htm>

California LTAP

3000 State University Drive East, Napa Hall
Sacramento, CA. 95819
Contact: Michelle Gianini
Phone: (916) 278-6174, E-mail: gianinim@csus.edu
Website: <http://www.californialtap.org/>

NEVADA



Nevada Department of Transportation

1263 South Stewart Street
Carson City, NV 89712
(775) 888-7000
<http://www.nevadadot.com>

The Nevada Department of Transportation is responsible for the planning, construction, operation and maintenance of the 5,400 miles of highway and over 1,000 bridges which make up the state highway system.

Inter-Tribal Council of Nevada

680 Greenbrae Dr., Suite 280
Sparks, Nevada 89431
Phone: (775) 355-0600 Fax: (775) 355-0648
<http://www.itcn.org/ITCN%20Home.html>

Nevada Indian Commission

5366 Snyder Avenue
Carson City, NV 89701
(775) 687-8333 Fax: (775) 687-8330
<http://www.nic.nv.gov>

Nevada LTAP

TMCC Meadowood Campus
5270 Neil Road, Room 302
Reno, NV 89502
Program Director: Randy Bowling
Phone: (775) 829-9045
E-mail: rbowling@tmcc.edu
Program Director: Jim Nichols
Phone: (775) 829-9022
E-mail: jnichols@tmcc.edu
Website: <http://www.tmcc.edu/ltap/>

TRIBAL TRANSPORTATION RESOURCES

CALIFORNIA

California State Transportation Agency (CalSTA)

A new state agency focused solely on transportation.

To visit the website go to:

<http://www.calsta.ca.gov/Default.htm>

California Department of Transportation (Caltrans)

Native American Liaison Branch

<http://dot.ca.gov/hq/tpp/offices/ocp/nalb/>

California Department of Transportation:

Division of Mass Transportation

<http://www.dot.ca.gov/hq/MassTrans/>

California Bay Delta Authority

<http://www.calwater.ca.gov/calfed/Tribal.html>

California Environmental Protection Agency

<http://www.calepa.ca.gov/>

California Rural Transit Assistance Program (RTAP)

California Association for Coordinated Transportation (CalAct) is under contract to Caltrans to implement RTAP in California.

<http://www.calact.org/doc.aspx?13>

NEVADA

Nevada Department of Transportation (NDOT)

Local Governmental Liaison

<http://www.nevadadot.com/>

Southern Nevada Regional Transportation Commission

<http://www.rtcsonthernnevada.com/>

Regional Transportation Commission (RTC) of Washoe County, Nevada.

<http://www.rtcwashoe.com/home>

FEDERAL

US DOT Federal Highway Administration (FHWA)

<http://www.fhwa.dot.gov/>

US DOT Federal Transit Administration (FTA)

<http://www.fta.dot.gov/>

FTA Region 9 Offices

<http://www.fta.dot.gov/about/region9.html>

Office of Federal Lands Highway

<http://flh.fhwa.dot.gov/>

Central Federal Lands Highway Division

<http://www.cflhd.gov/>

Bureau of Indian Affairs

<http://www.bia.gov/>

US DOT/FHWA Federal Lands Highway

Coordinated Technology Implementation Program (CTIP)
The Federal Lands Highway Coordinated Technology Implementation Program is a cooperative technology deployment and sharing program between the FHWA Federal Lands Highway office and the Federal land management agencies. It provides a forum for identifying, studying, documenting, and transferring new technology to the transportation community.

For more information go to:

<http://www.ctiponline.org/>

National Transportation Library (NTL)

Follow link: VDOT One Search

<http://ntl.bts.gov/exit/vdot.html>

ORGANIZATIONS

California Indian Basketweavers Association

<http://www.ciba.org/>

California Indian Manpower Consortium, Inc.

<http://www.cimcinc.org/>

California Indian Museum & Culture Center

<http://www.cimcc.org/>

National Indian Justice Center

<http://www.nijc.org/>

Center for Excellence in Rural Safety

Launched a new interactive Web tool called Safe Road Maps. It was developed by CERS researcher Tom Horan and his team at Claremont University. Visit the CERS home page for links to the releases and to Safe Road Maps:

www.ruralsafety.umn.edu

Office of Indian Energy and Economic Development

Tribal Energy and Environmental Information Clearinghouse (TEEIC)

The site includes information about energy resource development and associated environmental impacts and mitigation measures; guidance for conducting site-specific environmental assessments and developing monitoring programs; information about applicable federal laws and regulations; and federal and tribal points of contact.

<http://teeic.anl.gov/>

National Rural Transit Assistance Program (RTAP)

TRIBAL TRANSPORTATION RESOURCES

The program operates today under a cooperative agreement between the Federal Transit Administration and the Neponset Valley Transportation Management Association. Our overarching mission is to address the needs of rural, small urban and tribal transit operators across the nation.
<http://www.nationalrtap.org/Home.aspx>

TribalGIS.com

A technical forum for (and by) Tribal GIS Professionals across the country.
For more information go to:
www.tribalgis.com

LTAPP/TTAP Interchange-Podcasts

An Audio Newsletter
Aims to share news between centers and the LTAPP/TTAP community.
To listen go to the news section at:
<http://www.ltap.org/podcasts/>

California Tribal Transportation Coalition (CTTC)

Formed to ensure that California tribes are not left out of the next Federal Transportation Authorization bill.
For more information go to:
<http://www.californiatribes.org/>

Community Transportation Association of America

Technical Assistance for Rural and Tribal Communities
For more information go to:
<http://web1.ctaa.org/webmodules/webarticles/anmviewer.asp?a=49&z=36>

National Association of County Engineers

To visit the website go to:
<http://www.countyengineers.org/>

Northern California APWA Chapter

To visit the web site go to:
<http://northernca.apwa.net/>

ENVIRONMENTAL

US Environmental Protection Agency Region 9

<http://www.epa.gov/region09/tribal/index.html>

US EPA American Indian Environmental Office

<http://www.epa.gov/indian/>

US EPA Online Mapping Tool.

Interactive web-based mapping tool that provides the public with access and information on Environmental Impact Statements (EIS) .
To visit the website go to:
<http://nepassisttool.epa.gov/nepassist/eismapper/index.html>

US DOT FHWA Roadside Vegetation Management

A technical resource for the care of the land and vegetation management.
<http://www.environment.fhwa.dot.gov/ecosystems/vegmgmt.asp>

US DOT FHWA Livability Initiative

This webpage is intended to provide information on the FHWA Livability Initiative as well as provide updates on the HUD/DOT/EPA Partnership for Sustainable Communities.
To view this website go to:
<http://www.fhwa.dot.gov/livability/index.cfm>

ENVIRONMENT AND CLIMATE CHANGE

General Climate Change Information

Arnold & Porter Climate Change Litigation Summary Chart
<http://www.climatecasechart.com/>

US EPA

State and Local Government Climate Change Actions
<http://www.epa.gov/statelocalclimate/local/local-examples/action-plans.html>

National Highway Traffic Safety Administration (NHTSA)

Final Environmental Impact Statement Corporate Average Fuel Economy Standards, Passenger cars and Light Trucks, Model Years 2011-2015.
To view the document go to
<http://www.regulations.gov/#!documentDetail;D=NHTSA-2008-0060-0605;oldLink=false>

FHWA—Travel Modeling

Using GIS in Planning and Environment Linkages (PEL)
go to: <http://gis.fhwa.dot.gov>

California Climate Change Portal

<http://www.climatechange.ca.gov/state/index.html>

Multicultural Environmental Leadership Development Initiative (MELDI)

University of Michigan
Staff conduct research on environmental workforce dynamics and provides resources to help enhance the leadership and career development opportunities available to students, activists and environmental professionals.
For more information go to:
<http://meldi.snre.umich.edu/>

California Research Bureau

Environment, Growth Management, and Transportation

TRIBAL TRANSPORTATION RESOURCES

RESOURCES (Continued)

Supplement

For more information and links go to:

<http://www.library.ca.gov/sitn/crb/docs/20090504.pdf>

AASHTO–Center for Environmental Excellence

The new web page offers background and an overview of GIS technology and its importance for environmental applications in transportation.

For more information go to:

http://environment.transportation.org/environmental_issues/gis/

FHWA–Central Federal Lands Highway Division

Promoting Geosynthetics Use on Federal Lands Highway Projects

To view the study go to:

<http://www.cflhd.gov/resources/geotechnical/>

SAFETY RESOURCES

Tribal Road Safety Audits: Case Studies

Sponsored by FHWA (Office of Safety and Office of Federal Lands)

Road Safety Audits (RSAs) are an effective tool for proactively improving the future safety performance of a road project during the planning and design sates, and for identifying safety issues in existing transportation facilities.

For additional information and resources on RSA's go to:

<http://safety.fhwa.dot.gov/rsa/>

Arizona Department of Transportation

By Esther Corbett & Robert Mickelson at the Intertribal Council of Arizona, Inc.

592 Building Tribal Traffic Safety Capacity

<http://azmemory.azlibrary.gov/cdm/ref/collection/statepubs/id/6877>

And,

592 Tribal Traffic Safety Funding Guide

<http://azmemory.azlibrary.gov/cdm/ref/collection/statepubs/id/7181>

National Highway Traffic Safety Administration (NHTSA)

Fatality Analysis Reporting System (FARS)

<http://www-fars.nhtsa.dot.gov/Main/index.aspx>

FARS Native American Traffic Safety Facts

http://www-nrd.nhtsa.dot.gov/departments/nrd-30/ncsa/STSI/NA_Report.htm

National Institute for Occupational Safety and Health (NIOSH)

Construction Equipment Visibility

<http://www.cdc.gov/niosh/topics/highwayworkzones/BAD/>

Interactive Highway Safety Design Model –2014 Release

Includes a Beta version of crash prediction capabilities for freeway ramps/interchanges (including ramps, C-D roads and ramp terminals based on draft HSM Par C material developed under NCHRP Project 1-45. Available for free downloading at:

<http://www.ihsdm.org>

Work Zone Law Enforcement

Safe and Effective Use of Law Enforcement in Work Zones

For more information go to

http://safety.fhwa.dot.gov/wz/law_enforce/

FHWA Office of Safety

Local and Rural Road Safety Program

The FHWA Local and Rural Safety Program provides national leadership in identifying, developing, and delivering safety programs and products to local and officials and governments to improve highway safety on local and rural roads.

To visit the site go to:

http://safety.fhwa.dot.gov/local_rural/

Improving Safety on Rural Local and Tribal Roads — Safety Toolkit

The Safety Toolkit provides a step-by-step process to assist local agency and Tribal practitioners in completing traffic safety analyses, identify safety issues

To view the toolkit go to:

http://safety.fhwa.dot.gov/local_rural/training/fhwasa14072/isrltrst.pdf

Site Safety Analysis – *User Guide #1*

http://safety.fhwa.dot.gov/local_rural/training/fhwasa14073/isrltr1.pdf

Network Safety Analysis – *User Guide #2*

http://safety.fhwa.dot.gov/local_rural/training/fhwasa14074/isrltr2.pdf

Safety Circuit Rider Programs-Best Practices Guide

This guide is intended to provide state DOT and LTAP/TTAP centers with an easy -to- use resources for implementing or enhancing a Safety Circuit Rider (SCR) program.

Available on-line at:

http://safety.fhwa.dot.gov/local_rural/training/fhwasa09019/

Nighttime Visibility Policy/Guidance

http://safety.fhwa.dot.gov/roadway_dept/night_visib/policy_guide/

Sign Visibility: Training, Technical Guidance, & Research go to:

http://safety.fhwa.dot.gov/roadway_dept/night_visib/sign_visib/

TRIBAL TRANSPORTATION RESOURCES

Maintenance of Drainage Features for Safety

A guide for local street and highway maintenance personnel

To view the guide go to:

http://safety.fhwa.dot.gov/local_rural/training/fhwasa09024/

Intersection Safety Resources

To visit the web page go to:

<http://safety.fhwa.dot.gov/intersection/resources/>

Intersection Safety Presentations

30 and 60 minute presentations on the topic of safety at intersections. The presentation is intended to relay safety issues at intersections (including the typical types of crashes) along with some techniques to address these issues.

To view the presentations go to:

<http://safety.fhwa.dot.gov/intersection/resources/intsafpst092609/>

Work Zone Mobility and Safety Program

Work Zone Training Compendium

The U.S. Federal Highway Administration has released a compendium of information on available work zone training and guides.

To view the training program go to:

http://www.ops.fhwa.dot.gov/wz/outreach/wz_training/index.htm

Roundabouts

Roundabouts are circular intersections. Roundabouts reduce traffic conflicts (for example, left turns) that are frequent causes of crashes at traditional intersections.

Unlike a traffic circle or a rotary, a roundabout's incoming traffic yields to the circulating traffic

For more information visit the website at:

<http://safety.fhwa.dot.gov/intersection/roundabouts/>

Roundabout Outreach and Education Toolbox

This Toolbox is designed to be a highly useable, online reference that connects transportation professionals with outreach resources from across the country to help them obtain public support for roundabouts.

To utilize the tool box go to:

<http://safety.fhwa.dot.gov/intersection/roundabouts/roundabouttoolbox/>

Roadway Worker Safety Website

The U.S. Federal Highway Administration's Office of Operations has launched a new page on its Work Zone Safety website designed to be a central source of data and links to information and technical resources on roadway worker safety.

To visit the website go to:

<http://www.ops.fhwa.dot.gov/wz/workersafety/index.htm>

Training, Tools, Guidance and Countermeasures for Locals

Local and Rural team is continuously looking for new ways to meet the needs of local and rural road owners and operators. Insuring that tools meet the needs of the users and that they have the resources and training they need to effectively use the tools is a critical part of the solution.

To visit the web site go to:

http://safety.fhwa.dot.gov/local_rural/training/

Local & Rural Road (LRR) Safety Peer-to-Peer (P2P) Program

Open to public highway agencies seeking to adequately address safety problems on their local and rural road network.

To visit the website go to:

http://safety.fhwa.dot.gov/local_rural/training/p2p/

Proven Safety Countermeasures

New website from the Office of Safety

To visit the website go to:

<http://safety.fhwa.dot.gov/provencountermeasures/>

Resources: Crash Modification Factors in Practice

To visit the website go to:

<http://safety.fhwa.dot.gov/tools/crf/resources/cmfs/index.cfm>

Roadway Safety Noteworthy Practices Database

To visit the website go to:

<http://rspcb.safety.fhwa.dot.gov/noteworthy/>

Horizontal Curve Safety

A focus on horizontal curves can prove to be a cost effective approach to reducing roadway departure crashes.

To visit the website go to:

http://safety.fhwa.dot.gov/roadway_dept/horcurves/

Pedestrian Safety Guide and Countermeasure Selection System (Pedsafe)

An online toolbox that communities can use to improve pedestrian safety in their area.

To visit the website go to:

<http://www.pedbikesafe.org/PEDSAFE/index.cfm>

The National Work Zone Safety Information Clearinghouse

Work Zone Safety and Flagger Tutorial

The purpose of this tutorial is to provide the fundamentals of work zone safety and to explain the concepts of flagging in a work zone. It is not intended to replace comprehensive instruction of the topic.

To view the tutorial go to:

<http://www.workzonesafety.org/taxonomy/term/5606/all>

TRIBAL TRANSPORTATION RESOURCES

SAFETY RESOURCES (Continued)

The National Work Zone Safety Information Clearinghouse

The National Work Zone Safety Information Clearinghouse is dedicated to providing the transportation construction industry and the general public with comprehensive information to improve motorist, worker and pedestrian safety in roadway work zones.

Now a new international section in six languages.

For more information go to:

<http://www.workzonesafety.org/>

3M Roadway Safety

Guidance for Improving Roadway Safety:

Understanding Minimum Reflectivity Standards go to:

http://solutions.3m.com/wps/portal/3M/en_US/

[NA_roadway/safety/safetyinitiatives/](http://www.3m.com/na/roadway/safety/safetyinitiatives/)

[minimumretroreflectivity/](http://www.3m.com/na/roadway/safety/safetyinitiatives/minimumretroreflectivity/)

Federal Transit Administration

Transit Bus Safety Online resources and tools, designed to help rural and small urban transit bus providers develop and strengthen their programs.

To access the website go to:

<http://bussafety.fta.dot.gov/splash.php>

Utah DOT and the Utah Highway Safety Office

Zero Fatalities

To visit the web site go to:

<http://ut.zerofatalities.com/>

The National Work Zone Safety Information Clearinghouse

Traffic Management & Work Zone Safety Power Workshop at International Bridge Conference

The workshop was packed with timely information related to night work, federal regulations, worker protection and the latest strategies in temporary traffic control.

To view the workshop go to:

http://www.workzonesafety.org/news_events/

[wz_conferences/power_workshop2010_PA](http://www.workzonesafety.org/news_events/wz_conferences/power_workshop2010_PA)

Crash Modifications Clearinghouse (CFM)

The CMF Clearinghouse is funded by the U.S. DOT-FHWA and maintained by the University of North Carolina Highway Safety Research Center. A CMF is an estimate of the change in crashes expected after implementation of a countermeasure.

To visit the website go to:

<http://www.cmfclearinghouse.org/>

Impact Teen Driver

Impact Teen Drivers was organized for the purpose of providing awareness and education to teenagers, their parents, and community members about all facets of re-

sponsible driving, with the goal of reducing the number of injuries and deaths suffered by teen drivers as a result of distracted driving and poor decision making.

To view the website go to:

<http://www.impactteendrivers.org/>

Road Safety Foundation

To visit the web site go to:

<http://www.roadwaysafety.org/about-us/>

Center For Disease Control (CDC)

Native American Road Safety

To visit the web site go to:

<http://www.cdc.gov/Motorvehiclesafety/native/index.html>

Distraction.gov

The official U.S. Government website for distracted driving.

To visit the website go to:

<http://www.distraction.gov/index.html>

Safety Edge Resources

The Ohio LTAP Center is committed to providing our local roadway agencies the necessary information for implementing the Safety Edge on their paving projects across our state.

To visit the website go to:

<http://www.dot.state.oh.us/Divisions/Planning/>

[LocalPrograms/LTAP/Pages/SafetyEdge.aspx](http://www.dot.state.oh.us/Divisions/Planning/LocalPrograms/LTAP/Pages/SafetyEdge.aspx)

Newly Revised Emergency Procedures for Rural Transit Drivers Training Module

National RTAP

The *Emergency Procedures* module offers the most current training on preparedness for hazards and threats that transit operators may encounter. The free module contains a Learner's Guide, a Self-paced eLearning Course Disc, an Instructor's Guide, a disc with videos and a trainer's PowerPoint presentation. Email info@nationalrtap.org or call 888-589-6821 to order.

Safe Routes to School Local Policy Guide

An additional effort to bring public health considerations into the development of transportation policies and practices.

To view the guide go to:

<http://www.saferoutespartnership.org/media/file/>

[Local_Policy_Guide_2011.pdf](http://www.saferoutespartnership.org/media/file/Local_Policy_Guide_2011.pdf)

The California Safe Routes to School Technical Assistance Resource Center (TARC)

Assists local communities with creating Safe Routes to School (SRTS) programs by providing trainings, technical assistance, and resources to implement safe and successful SRTS strategies throughout California.

To visit the website go to:

<http://www.casaferoutestoschool.org/>

TRIBAL TRANSPORTATION RESOURCES

Department of Labor-OSHA

OSHA Construction Focus Four Hazards Training materials
For more information go to:

http://www.osha.gov/dte/outreach/construction/focus_four/index.html

LTAP/TTAP Safety Toolkit

National LTAP/TTAP

To visit the website go to:

<http://www.ltap.org/resources/safety/>

University of Minnesota Center for Transportation Studies

"Distraction Dodger" Game

Distraction Dodger is an online game designed to help teens and young adults understand the importance of concentrating on driving.

To view the game go to:

<http://www.its.umn.edu/DistractionDodger/>

National Highway Traffic Safety Administration (NHTSA)

Emergency Medical Services

To reduce death and disability by providing leadership and coordination to the EMS community in assessing, planning, developing, and promoting comprehensive, evidence-based emergency medical services and 9-1-1 systems.

To visit the website go to:

<http://www.ems.gov/index.htm>

Everyone is a Pedestrian

A one-stop shop website safety tips and resources for local leaders, city planners, parents and others involved in improving pedestrian safety.

To visit the website go to:

<http://www.nhtsa.gov/nhtsa/everyoneisapedestrian/index.html>

Federal Government

Data.gov - Empowering People

Data.gov increases the ability of the public to easily find, download, and use datasets that are generated and held by the Federal Government.

To visit the website go to:

<http://www.data.gov/>

High Friction Roads

The Transtec Group is a pavement engineering firm Surface Enhancements At Horizontal Curves (SEAHC)

To visit the website go to:

<http://www.highfrictionroads.com/>

National Highway Traffic Safety Administration (NHTSA)

Native American Data available in FARS

Native American fatalities, Native American fatalities on Tribal reservations, and all fatalities on Tribal reservations from 2007-2011

To visit the website go to:

http://www-nrd.nhtsa.dot.gov/departments/nrd-30/ncsa/STSI/USA_WEB_REPORT.HTM

California Department of Public Health

WalkSmartCA is part of the *It's Up to All of Us* public education campaign, which is designed to educate both pedestrians and drivers on what steps they can take to keep our streets safe.

To visit the website go to:

<http://www.cdph.ca.gov/HealthInfo/injviosaf/Pages/WalkSmartCA.aspx>

California Pedestrian Safety (PedSafe) Program

PedSafe aims to create environments where these activities can happen safely by implementing a multi-faceted approach of education, media outreach and messaging, technical assistance, and training and facilitation.

To visit the website go to:

<http://www.cdph.ca.gov/programs/SACB/Pages/ItsUp2Us.aspx>

Centers for Disease Control and Prevention (CDC)

CDC's WISQARS™ (Web-based Injury Statistics Query and Reporting System) CDC's WISQARS™ (Web-based Injury Statistics Query and Reporting System)

To visit the web site go to:

<http://www.cdc.gov/injury/wisqars/>

National Road Safety Foundation (NRSF)

To Visit the website go to:

<http://www.nrsf.org/>

Animated Traffic Law

Visualizing traffic law

To visit the website go to:

<http://animatedtrafficlaw.org/atlc/>

Teens In The Drivers Seat

Texas A&M Transportation Institute

To visit the website go to:

<http://www.t-driver.com/>

Tribal Transportation Safety

To visit the website go to:

<http://www.tribalsafety.org/>

TRIBAL TRANSPORTATION RESOURCES

SAFETY RESOURCES (Continued)

California Department of Transportation (Caltrans)

Caltrans has begun the process of creating the State's first **Bicycle and Pedestrian Plan**. They are seeking feedback and will be conducting public outreach over the next year. Caltrans has posted a public survey to provide input on their website here: www.cabikepedplan.org.

CONSULTATION

California Office of the Tribal Advisor

Responsible for overseeing and implementing effective government-to-government consultation between the Governor's Administration and California Tribes on policies that affect California tribal communities.

To visit the website go to:

<http://tribalgovtaffairs.ca.gov>

TRB Committee on Native American Transportation Issues

TRB has provided links to examples of federal, state and non-governmental organization online resources related to tribal consultation policies and guidelines.

To view the resources go to:

<http://sites.google.com/site/trbcommitteeabe80/WELCOME/links>

FHWA-Tribal Transportation Planning

Delivers products and services that provide information, training, and technical assistance to the transportation professionals responsible for planning for the capital, operating, and maintenance needs on Tribal lands.

To visit the website go to:

<http://www.tribalplanning.fhwa.dot.gov/>

FHWA-Transportation Planning Capacity Building (TPCB) Tribal Planning Resources

Offers transportation planning professionals legislative, regulatory, and general guidance; technical resources; and relevant links related to Tribal planning issues.

To visit the website go to:

http://www.planning.dot.gov/focus_tribal.asp

MORE TRANSPORTATION RESOURCES

U.S. DOT

U.S. Research and Innovative Technology Administration (RITA)

Research Program and Project Management Website

To visit the website go to:

<http://www.transportationresearch.gov/rppm/default.aspx>

U.S. DOT

U.S. Research and Innovative Technology Administration

(RITA)

ITS ePrimer

Provides transportation professionals with fundamental concepts and practices related to ITS technologies.

To visit the website go to:

<http://www.pcb.its.dot.gov/ePrimer.aspx>

U.S. DOT

Research Hub Website

A searchable database of the latest U.S.DOT-sponsored research, development and technology projects

To visit the website go to:

<http://ntlsearch.bts.gov/researchhub/index.do>

U.S. DOT-Transportation.gov

Transportation and Health Tool

Developed by the U.S. DOT and the Centers for Disease Control and Prevention to provide easy access to data that practitioners can use to examine the health impacts of transportation systems.

To visit the website go to:

<https://www.transportation.gov/transportation-health-tool>

FHWA-National Highway Specifications

Clearinghouse and electronic library. Current specifications, construction manuals and drawings.

For more information go to:

www.specs.fhwa.dot.gov

FHWA Resource Center Planning Team

The Planning Technical Service Team at the Federal Highway Administration (FHWA) Resource Center helps support the planning process through the provision of training, technical assistance, technology deployment, and partnerships.

For more information go to:

<http://www.fhwa.dot.gov/resourcecenter/teams/planning/>

FHWA Federal-Aid Program Administration

The guide is intended to provide basic information for FHWA and State personnel involved in the administration of the Federal-Aid Highway Program. It is not intended to be an eligibility guide, but contains basic descriptions and historical information on active and inactive programs.

This guide should be of interest to FHWA, State highway agencies, local governments, and private sector personnel interested in a basic understanding of Federal-Aid programs, projects, or other program characteristics. In addition to basic information, sources of additional information are provided.

For more information go to:

<http://www.fhwa.dot.gov/federalaid/>

FHWA Soil Nail Analysis Program (SNAP) & Users Manual– Geotechnical.

TRIBAL TRANSPORTATION RESOURCES

FHWA-CFL/TD-10-004

A program for designing soil nail earth retaining structures, including both the nail and wall-facing elements of the structure.

To download the program go to:

<http://www.cflhd.gov/programs/techDevelopment/geotech/SNAP/>

FHWA-Bureau of Indian Affairs (BIA)

Indian Reservation Roads Program: Stewardship Plan

To view the plan go to:

<http://www.ewu.edu/Documents/CBPA/NWTTAP/StewardshipPlan.pdf>

FHWA In Cooperation with the Federal Transit Administration (FTA)

Planning for Transportation in Rural Areas

To view the guide go to:

http://www.ewu.edu/Documents/CBPA/NWTTAP/RuralGuidebookfinal_7_10_01.pdf

FHWA

Office of Planning, Environment, & Realty (HEP)
Livable Communities

To visit the website go to:

<http://www.fhwa.dot.gov/livability/>

FHWA

The Federal-aid Highway Program Policy & Guidance Center
The PGC provides a central location of laws, policies, and guidance about the *Federal-Aid Highway Program* (FAHP)

To visit the website go to:

<http://www.fhwa.dot.gov/pgc/>

FHWA

INVEST (Infrastructure Voluntary Evaluation Sustainability Tool) was developed by FHWA as a practical, web-based, collection of voluntary best practices, called criteria, designed to help transportation agencies integrate sustainability into their programs (policies, processes, procedures and practices) and projects .

To visit the website go to:

<https://www.sustainablehighways.org/>

FHWA

Tribal Transportation Planning

To visit the website go to:

<http://www.fhwa.dot.gov/planning/processes/tribal/>

FHWA

Federal-aid Essentials for Local Public Agencies

To visit the homepage go to:

<http://www.fhwa.dot.gov/federal-aidessentials/>

Federal-aid Program Overview. 18 videos.

<http://www.fhwa.dot.gov/federal-aidessentials/catmod.cfm?category=overview>

Civil Rights: Title VI/Nondiscrimination 17 videos

<http://www.fhwa.dot.gov/federal-aidessentials/catmod.cfm?category=civilrig>

Finance: Administrative Requirements 9 videos

<http://www.fhwa.dot.gov/federal-aidessentials/catmod.cfm?category=finance>

Environment: NEPA Regulatory Framework and Process 17 videos

<http://www.fhwa.dot.gov/federal-aidessentials/catmod.cfm?category=environm>

Right-Of-Way 6 videos

<http://www.fhwa.dot.gov/federal-aidessentials/catmod.cfm?category=rightofw>

Project Development: Required Approvals 19 videos

<http://www.fhwa.dot.gov/federal-aidessentials/catmod.cfm?category=develop>

Project Construction and Contract Administration: Safety and Operations 14 Videos

<http://www.fhwa.dot.gov/federal-aidessentials/catmod.cfm?category=construc>

FHWA

Asset Management

The mission of the Asset Management team is to provide leadership and expertise in the systematic management of highway infrastructure assets.

To visit the website go to:

<http://www.fhwa.dot.gov/asset/about.cfm>

FHWA

National Transportation Atlas Database (NTAD) 2015 DVD.

To download the DVD go to:

<https://2bts.rita.dot.gov/pdc/user/products/src/products.xml?p=33865&c=-1>

FHWA

Construction

To visit the website go to:

<http://www.fhwa.dot.gov/construction/>

FHWA-Federal Lands Highway (FLH)

Strategic Transportation Safety Plan Toolkit for Tribal Governments

To visit the web site go to:

<http://flh.fhwa.dot.gov/programs/ttp/safety/stsp-toolkit.htm>

TRIBAL TRANSPORTATION RESOURCES

MORE TRANSPORTATION RESOURCES (Continued)

FTA

National Transit Data Base

To visit the website go to:

<http://www.ntdprogram.gov/ntdprogram/>

Strategic Highway Research Program (SHRP 2)

Non-Destructive Testing (NDT) Toolbox

Web-Based electronic repository now available.

To visit the site go to:

<http://www.ndtoolbox.org/>

Rural Transit Assistance Program (RTAP)

National RTAP proudly serves tribal communities residing in rural areas. Tribes are encouraged to access all of the National RTAP best practices, reports, training videos, workbooks, surveys and direct one-on-one technical assistance through our resource center.

To visit the center go to:

<http://www.nationalrtap.org/Tribal-Transit>

Victoria Transportation Policy Institute

Transportation Cost and Benefit Analysis

A guidebook for quantifying the full costs and benefits of different transportation modes. A comprehensive study of transportation benefit and costing research, and a guidebook for applying this information in planning and policy analysis.

To view the guide book go to:

<http://www.vtpi.org/tca/>

Partnership for Mobility Management

The Partnership for Mobility Management is a joint effort of technical assistance partners that work with local, state and regional leaders and organizations to realize the possibilities of improving transportation options for all Americans wherever they live and to assist those especially in need of alternative transportation options.

For more information visit the website at:

<http://web1.ctaa.org/webmodules/webarticles/anmviewer.asp?a=1790&z=95>

Research and Innovative Technology Administration (RITA): University Transportation Centers

The Research and Innovative Technology Administration (RITA) coordinates the U.S. Department of Transportation's (DOT) research programs and is charged with advancing the deployment of cross-cutting technologies to improve our Nation's transportation system. Within the Office of RD&T, the University Transportation Centers (UTC) program funds transportation research at 136 colleges and universities and provides the education and training needed to advance the nation's transportation system.

To view the UTC website go to:

<http://www.rita.dot.gov/utc/>

Montana State University, Western Transportation Institute, (WTI)

The country's largest National UTC focused on rural transportation issues. Because we live and work in rural communities, we understand the critical roles rural transportation plays in the lives of people, in the environment and in the economy.

To visit the website go to:

<http://www.wti.montana.edu/>

ArcGIS Online—Map Services

ArcGIS Online base maps published and hosted by Esri are now freely available to all users regardless of commercial, noncommercial, internal, or external use. This means that you no longer have to pay a subscription fee for including ArcGIS Online base maps in your commercial-use web applications.

Base maps included in this new business model are World Imagery Map, World Street Map, World Topographic Map, USA Topographic Maps, and DeLorme World Base map.

To visit the website go to:

<http://www.esri.com/>

Go! Exploring the World of Transportation

A dynamic online magazine for teens ages 13–19 on careers in transportation. Published by the Institute for Transportation, Iowa State University.

Top visit the web site go to:

<http://www.go-explore-trans.org/>

Rural Transit Assistance Program (RTAP)-Procurement Pro

Designed to give Indian tribes, non-profit organizations, municipalities and transportation agencies the appropriate federal clauses and certifications regarding federal procurement requirements and processes when utilizing federal funds.

To visit the website go to:

<http://webbuilder.nationalrtap.org/WebApps/ProcurementPRO.aspx>

Bicyclinginfo.org

Pedestrian and Bicycle Information Center

Provides resources and information to promote bike to work events and bike commuting.

To visit the website go to:

<http://www.bicyclinginfo.org/index.cfm>

Traffic Sign Retroreflectivity Maintenance Program

This resource publication/package was developed to assist Ohio local agencies in their efforts to meet the national January 2012 compliance date for implementing a program that can regularly address the new sign Retroreflectivity maintenance requirements.

To download the program go to:

TRIBAL TRANSPORTATION RESOURCES

<http://www.dot.state.oh.us/Divisions/Planning/LocalPrograms/LTAP/Pages/ImplementingaTrafficSignRetroreflectivityMaintenance-Program.aspx>

Indian Land Tenure Foundation (ILTF)

A national, community-based organization focused on American Indian land recovery and management.

To visit the website go to:

<http://www.iltf.org/>

Coordinated Technology Implementation Program (CTIP)

Roadside Revegetation Portal-An Integrated Approach to Establishing Native Plants

To visit the website go to:

<http://www.nativerevegetation.org/>

Interactive Map for Supplemental Transportation Programs

Beverly Foundation's Interactive Map of 1038 Supplemental Transportation Programs (STP), community-based organizations providing transportation.

To visit the website go to:

<http://beverlyfoundation.org/map-of-stps-in-america/>

One Call - One Click Transportation Services Toolkit Community Transportation Association of America (CTTA)

Provides information for communities interested in working together-whether locally, regionally or statewide-to develop a one-call or one-click service for transportation.

To visit the website go to:

<http://web1.ctaa.org/webmodules/webarticles/anviewer.asp?a=2428&z=101>

AASHTO Systems Operations & Management Guidance

An online tool that uses self-evaluation and best practice experience that managers can use to identify key program, process and institutional preconditions to achieve more effective SO&M.

To visit the website go to:

<http://www.aashtosomguidance.org/>

Small Urban and Rural Transit Center (SURTC)

The purpose is to increase the mobility of small urban and rural residents through improved public transportation.

To visit the site go to:

<http://www.surtc.org/>

United States Transportation Facts and Figures

Find state-by-state transportation facts, comparisons and rankings.

To visit the website go to:

<http://gis.rita.dot.gov/StateFacts/>

Transportation for Communities - Advancing Projects Through Partnerships (TCAPP)

The CAPP website provides a systematic approach for reaching collaborative decisions about adding highway capacity that enhance the environment, the economy, and the community and improve transportation.

To visit the website go to:

<http://transportationforcommunities.com/>

CalTrans Earth

GIS interface as a resource for public use.

To visit the website go to:

<http://earth.dot.ca.gov/>

California Department of Public Health (CDPH)

California Environmental Health Tracking Program (CEHTP)

To visit the website go to:

http://www.ehib.org/project.jsp?project_key=EHSS01

National Transportation Consortium (NTC)

The NTC is a non-profit corporation created for one purpose: provide tribal governments and their enterprises a better method for buying buses and transportation services.

To visit the website go to:

<http://www.nativetransit.org/>

U.S. Department of Housing and Urban Development (HUD)

Tribal Directory Assessment Tool (TDAT) v2.0

TDAT was designed to help users quickly identify tribes and provide appropriate tribal contact information to assist with initiating Section 106 consultation.

To visit the website go to:

<http://egis.hud.gov/tdat/Tribal.aspx>

National Center for Mobility Management

Focuses on transportation's many customer groups: current and potential riders; employers, economic development groups, and local business associations; human service agencies and their clients; taxpayers and other funders; and local governments.

To visit the website go to:

<http://nationalcenterformobilitymanagement.org/>

American Road and Transportation Builders Association (ARTBA)

Transportation Investment Advocacy Center (TIAC)

The program is aimed at helping private citizens, legislators, organizations and businesses successfully grow transportation infrastructure resources at the state and local levels through the legislative and ballot initiative processes.

To visit the website go to:

<http://www.transportationinvestment.org/>

TRIBAL TRANSPORTATION RESOURCES

MORE TRANSPORTATION RESOURCES (Continued)

Ready Indian Country

The goal of Ready Indian Country is to collaborate with tribal governments to build emergency management capability and partnerships to ensure continued survival of Tribal nations and communities.

To visit the web site go to:

<http://www.ready.gov/make-a-plan/indian-country>

CalACT

California Association for Coordinated Transportation is a statewide, non-profit organization that has represented the interests of small, rural, and specialized transportation providers since 1984.

To visit the website go to:

<http://www.calact.org/home>

California Department of Transportation (Caltrans)

California Transportation Plan (CTP) 2040 website
CTP provides a long-range policy framework to meet our future mobility needs and reduce greenhouse gas emissions.

To visit the website go to:

<http://www.dot.ca.gov/hq/tpp/californiatrnsportationplan2040/index.shtml>

California Transportation Commission

California Road Charge Technical Advisory Committee and Pilot Program

The California Road Charge Technical Advisory Committee was established in 2014 by Senate Bill 1077 (Chapter 835, Statutes of 2014). SB 1077 created the California Road Usage Charge Pilot Program and tasked the Chair of the Commission, in consultation with the California State Transportation Agency (CalSTA) to convene a fifteen member Technical Advisory Committee (TAC) to study road usage charge alternatives to the gas tax, gather public comment, and make recommendations to CalSTA regarding the design of a road usage charge pilot program.

To visit the website go to:

http://www.catc.ca.gov/meetings/Committees/Road_Charge/Road_Charge.html

Community Transportation Association of America (CTAA)

FedCentral

The site offers news and analysis of Congressional hearings, regulatory news, important resources and more

To visit the website go to:

<http://web1.ctaa.org/webmodules/webarticles/anmviewer.asp?a=2923&z=37>

TripSpark

TripSpark makes this possible by linking the latest technologies with a dedicated focus to help you grow your operation

and meet evolving community transit needs.

To visit the website go to:

<http://www.tripspark.com/>

WEBSITE APPLICATIONS—APPS

Heat Safety Tool App

U.S. Department of Labor (DOL), Occupational Safety and Health Administration (OSHA)

The App allows workers and supervisors to calculate the heat index for their worksite.

To download the app go to:

https://www.osha.gov/SLTC/heatillness/heat_index/heat_app.html

Transportation Construction Advocate App

American Road & Transportation Builders Association (ARTBA)

Available for both Android and Apple devices.

To download the app go to:

[Google Play or iTunes.](#)

Asphalt Calculator+ App

This iPhone/iPod Touch app will calculate the amount of cubic yards needed for a given job. It will also calculate hot mix tonnage. Polyclef Software.

To download the app go to:

[Google Play or iTunes.](#)

Life Saver Apps

Distracted driving for parents and students.

Android and iPhone.

To visit the website go to:

<http://lifesaver-app.com/>

TC3 Free Mobile App

TC3 is an AASHTO technical service program focused on the web-based training of front-line workers in the areas of construction, maintenance, and materials.

Download the app today at:

<http://tc3app.com/install/>

TRANSPORTATION PROGRAMS AND DEVELOPMENT



FHWA Resource Center

The Mission to advance transportation technologies and solutions through training, technical assistance, technology deployment, and partnerships.

For more information go to:

TRIBAL TRANSPORTATION RESOURCES

<http://www.fhwa.dot.gov/resourcecenter/>

The FHWA has developed an extensive list of resources that focus specifically on the latest culvert technology. To view this list go to:

<http://www.scribd.com/doc/63745094/Culvert-Technologies-List>

Pavement Construction and Safety Training on Demand
New free Web-based courses sponsored by the Federal Highway Administration (FHWA)

To view the courses go to:

<http://www.fhwa.dot.gov/publications/focus/13jul/13jul02.cfm>

In partnership with the University of Texas at El Paso, two free web based training courses on Intelligent Compaction and Asphalt Stringless Paving

Intelligent Compaction: http://ctis.utep.edu/FHWA_TrainingCourse/

Stringless or GPS Based Asphalt Paving: http://ctis.utep.edu/FHWA_AspphaltString/

National Transit Institute (NTI)

Rutgers, the State University of New Jersey

- Assault Awareness and Prevention for Transit Operators course. Three hours FREE.

For more information go to:

<http://www.ntionline.com/courses/courseinfo.php?id=274>

National Highway Institute (NHI) 2015

Free web-based training:

- **New.** Introduction to FRP Materials and Applications for Concrete course 130105A
- **New.** Applying Section 4(f): Putting Policy into Practice course 142073.
- **New.** National Traffic Incident Management Responder Training course 133126.
- **New.** Combating Roadway Departures Course 380117.

The following updated training is available.

- **New** 130093W Introduction to Earthquake Engineering is a web based prerequisite to 130093A Displacement-Based LRFD Seismic Analysis and Design of Bridges
- 132010A entitled "Earthquake Engineering Fundamentals" is a Web-based prerequisite to 132094A and
- 2094B. Participants will generally be notified to take the WBT course about 1 month before the following two sessions.
- 132094A entitled "LRFD Seismic Analysis and sign of Transportation Geotechnical Features" .
- 132094B entitled "LRFD Seismic Analysis and Design of Structural Foundations and Earth Retaining Structures".

To view the course details go to:

<http://www.nhi.fhwa.dot.gov/default.aspx>

National Transportation Training Resource (NTTR)

The National Transportation Training Resource (NTTR) is an online database of information about learning resources for the public-sector transportation workforce. The NTTR is a tool for training managers and frontline transportation professionals.

To visit the website go to: <http://www.nttr.dot.gov/>

Federal Emergency Management Agency (FEMA)

Emergency Management Institute Tribal Curriculum

To collaborate with tribal governments to build emergency management capability and partnerships to ensure continued survival of Tribal nations and communities.

To view the course go to:

<http://www.fema.gov/training/training-tribal-representatives>

FHWA Wildlife Vehicle Collision Reduction Study Training Course

A national study was conducted on the causes and impacts of wildlife vehicle collisions (WVCs). This study also provides recommendations and solutions for reducing these collisions.

To view the course go to:

www.environment.fhwa.dot.gov/WVCtraining/index.asp

National Cooperative Highway Research Program (NCHRP)

Report 667

Model Curriculum for Highway Safety Core Competencies presents course materials, including the instructor's guide and student workbook, for a fundamental highway safety training course. The course is designed to address the core competencies highway safety practitioners should have or acquire. An accompanying CD-ROM includes a brochure and short Microsoft PowerPoint presentation for marketing the training course.

To view the report go to:

http://onlinepubs.trb.org/onlinepubs/nchrp/nchrp_rpt_667.pdf

Paul S. Sarbanes Transit in Parks Technical Assistance Center (TRIPTAC)

The TRIPTAC is available to *all* Federal Land Management Agencies (FLMAs), not only those applying for or receiving funds from the Transit in Parks program. State, local or tribal governments who are working in collaboration with an FLMA to expand public lands access are also welcome to use TRIPTAC services to obtain alternative transportation information and assistance.

To view available training courses go to:

<http://www.triptac.org/>

TRIBAL TRANSPORTATION RESOURCES

TRANSPORTATION PROGRAMS AND DEVELOPMENT (Continued)

University of California, Berkeley, Institute of Transportation Studies

Technology Transfer Program

To visit the website go to:

<http://www.techtransfer.berkeley.edu/>

U.S. Small Business Administration (SBA)

Online Courses for Starting Your Business

Several **free** online courses are offered by the SBA to help prospective and existing entrepreneurs understand the basics about writing a business plan.

For more information go to:

<http://www.sba.gov/content/online-courses-starting-your-business>

Community Transportation Association of America (CTAA)

Passenger Service and Safety PASS Basic Training Program

The PASS Basic program consists of 6 modules and includes comprehensive training on the assistance that drivers should be providing to passengers with special need.

For more information go to:

<http://training.ctaa.org/>

Community Transportation Safety and Security Accreditation (CTSSA)

The program is designed to promote the safety and security of the customers of community and public transportation systems and also to promote the safety and security of the women and men who deliver these services and provide mobility for the riding public every day.

For more information go to:

<http://web1.ctaa.org/webmodules/webarticles/anmviewer.asp?a=32&z=36>

Minnesota Local Technical assistance Program (LTAP)

Gravel Road Maintenance and Design (Online)

This course helps supervisory personnel and operators better understand the materials, techniques, and equipment needed for maintaining gravel roads.

To enroll in the course go to:

<http://www.mnltap.umn.edu/training/topic/maintenance/gravel/online.html>

Curbing Transit Employee Distracted Driving

The 30-minute course, was developed by FTA in conjunction with the Florida Department of Transportation. It's an excellent tool to educate, inform, and increase awareness among all transit workers about the dangers and challenges associated with distracted driving.

For more information go to:

http://www.fta.dot.gov/newsroom/12910_14467.html

Work-Zone Safety Tutorial

Minnesota LTAP has launched a new online free tutorial that offers a convenient opportunity for new, seasonal, or temporary staff to learn about the fundamentals of work-zone safety and the basic concepts of the work-zone area before arriving at the job site.

There is no cost to take the tutorial, and registration is not required.

To view the tutorial go to:

<http://www.mnltap.umn.edu/training/web/workzone/>

Cal EPA

Training: California Indian Tribal Relations

CalEPA's step forward toward meeting our "commitment to educate appropriate staff, to become informed about the cultural setting of California Native Americans, their environmental issues and Tribal histories, for the purpose of improving CalEPA's understanding of and connection to California Native American Tribes."

To visit the website go to:

<http://calepa.ca.gov/tribal/training/>

Minnesota Local Road Research Board (LRRB)

YouTube video library with 34 videos to date.

For more than 50 years, the Local Road Research Board (LRRB) has brought important developments to transportation engineers throughout Minnesota. Those developments range from new ways to determine pavement strength to innovative methods for engaging the public. Today, the LRRB remains true to its important mission: supporting and sharing the latest transportation research applications with the state's city and county engineers.

To view the videos go to:

<https://www.youtube.com/user/lrrbmn>

FHWA-Developing a Transportation Safety Plan

How to conduct transportation safety planning and develop Transportation Safety Plans. It is based on the Developing a Transportation Safety Plan module, which is one of 12 modules in the series Transportation Decision-making: Information Tools for Tribal Governments. The FHWA Office of Planning produced this series to educate tribal planners and decision makers about the tribal transportation planning process and to provide them with useful program information.

To visit the website go to:

http://www.fhwa.dot.gov/planning/processes/tribal/planning_modules/safety/summary.cfm

TRIBAL TRANSPORTATION FUNDING RESOURCES

PUBLICATIONS



The NIJC web site has the complete list of publications, newsletters, videos, CDs, and DVDs going back several years. To view the Tribal Transportation (TTAP) Resources data base go to:

http://nijc.org/datasheets/ttap/TAP_ResourceList.asp

Ordering Information

Printed copies of our in-house publications are available on a first-come, first served basis. Priority is given to Tribal Transportation Personnel. PDF versions of most of our publications are available on our website: http://www.nijc.org/ttap_resources.html

All our videos, publications and CD-ROMs in our lending library are loaned for a four-week period. Two titles may be borrowed at a time.

To order or borrow materials, please send a request to: barry@nijc.org or nijc@aol.com or Fax a request to: 707-579-9019.

To view past issues of publications, videos and development programs, please visit our website library at: http://nijc.org/datasheets/ttap/TTAP_ResourceList.asp

Local Assistance, Office of Active Transportation and Special Programs.

The purpose of ATP is to encourage increased use of active modes of transportation by achieving the following goals:

- Increase the proportion of trips accomplished by biking and walking,
- Increase safety and mobility for non-motorized users,
- Advance the active transportation efforts of regional agencies to achieve greenhouse gas (GHG) reduction goals,
- Enhance public health,
- Ensure that disadvantaged communities fully share in the benefits of the program, and
- Provide a broad spectrum of projects to benefit many types of active transportation users.

Cycle 3 dates to be determined.

For more information go to:

<http://www.dot.ca.gov/hq/LocalPrograms/atp/index.html>

Memorandum of Understanding (MOU)

The California Department of Transportation (Caltrans), in consultation with the Governor's Office of Small Business Advocate, have entered into a Memorandum of Understanding (MOU) with the U.S. Small Business Administration (SBA), to offer a technical assistance surety bond guarantee program to promote increased small business participation in this initiative provides a viable means to advance the unimpeded participation of all willing, ready, and able construction contractors and subcontractors, professional architectural and engineering firms, suppliers and truckers, without regard to race, ethnicity, gender, or physical disability to participate in the State's Contracting Program.

For more information contact a Small Business Development Center in your area, or call Linda Madden 919-324-8384; e-mail Linda_Madden@dot.ca.gov

California Department of Resources Recycling and Recovery (CalRecycle)

CalRecycle offers a variety of grant funding opportunities to assist public and private entities in safely and effectively managing California's waste stream.

Application materials forthcoming:

- Beverage Container Recycling Grants.
- Farm and Ranch Cleanup Grants. **FY 2015-2016 applications due February 9, 2016.**
- Household Hazardous Waste (HHW) Grants.
- Local Enforcement Agency Grants. FY 2016-2017 applications tentatively available Spring 2016.
- Illegal Disposal Site Abatement Grant Program. **FY 2015-2016 applications due February 4, 2016.**
- Legacy Disposal Site Abatement Partial Grant Program. **FY 2015-2016 applications due February 4, 2016.**
- Waste Tire Cleanup grants. **FY 2016/17 applications due March 3, 2016**

CALIFORNIA



CALIFORNIA DEPARTMENT OF TRANSPORTATION (CALTRANS)

On September 26, 2013, Governor Brown signed legislation creating the Active Transportation Program (ATP) in the Department of Transportation ([Senate Bill 99, Chapter 359](#) and [Assembly Bill 101, Chapter 354](#)). The ATP consolidates existing federal and state transportation programs, including the Transportation Alternatives Program (TAP), Bicycle Transportation Account (BTA), and State Safe Routes to School (SR2S), into a single program with a focus to make California a national leader in active transportation. The ATP administered by the Division of

TRIBAL TRANSPORTATION FUNDING RESOURCES

FUNDING (Continued)

- Rubberized Pavement (TRP) Grant Program.
- Tire-Derived Aggregate (TDA) Grant Program. FY 2015-16 will tentatively be available Fall 2015
- Tire-Derived Product Grant Program.

Additional grant information and list of active grants can be found at:

<http://www.calrecycle.ca.gov/Funding/>

Highway Safety Improvement Program (HSIP)

It is never too early for local agencies to analyze their roadway network to 1) identify their highest crash locations and corridors, 2) consider effective and efficient countermeasures to improve the safety of these locations/corridors, and 3) identify projects that have the highest Benefit-to-Cost ratios. **Cycle 8 anticipated announcement April 2016, targeted due date July 2016.**

http://www.dot.ca.gov/hq/LocalPrograms/HSIP/prepare_now.htm

Sustainable Transportation Planning Grant Program

The program was created to support the California Department of Transportation's (Caltrans) current Mission: Provide a safe, sustainable, integrated and efficient transportation system to enhance California's economy and livability.

FY 2016-17 is closed.

For more information go to:

<http://www.dot.ca.gov/hq/tpp/grants.html>

NEVADA

Nevada Department of Transportation (NDOT)

Transportation Alternatives Program (TAP)

The Nevada TAP provides federal transportation funds for projects that improve non-motorized mobility, historic preservation, scenic accessibility, safe routes to school (SRTS) and environmental/vegetation management.

FY 2015 funding closed.

For more information go to:

<http://www.nevadadot.com/tap/>

Nevada Transportation Enhancement Program

The Nevada Department of Transportation (NDOT) and the Federal Highway Administration (FHWA) share your interest in these projects and others that enhance the transportation experience in your area and make our communities more livable. The TE program was developed to fund projects that go beyond where typical transportation projects usually stop.

Applications due the second Monday each March

For more information go to:

http://www.nevadadot.com/Projects_and_Programs/

[Landscape and Aesthetics/
Landscape_Aesthetics_Program.aspx](#)

FEDERAL

U.S. DEPARTMENT OF TRANSPORTATION

Transportation Alternatives Program (TAP)

- **Safe Routes to School Program.**
- **National Scenic Byways**

The Moving Ahead for Progress in the 21st Century Act (MAP-21) authorized the Transportation Alternatives Program (TAP) to provide funding for programs and projects defined as *transportation alternatives*, including on- and off-road pedestrian and bicycle facilities, infrastructure projects for improving non-driver access to public transportation and enhanced mobility, community improvement activities, and environmental mitigation; recreational trail projects; safe routes to school projects; and projects for planning, designing, or constructing boulevards and other roadways largely in the right-of-way of former divided highways. The TAP replaced the funding from pre-MAP-21 programs including the Transportation Enhancement Activities, Recreational Trails Program.

For more information go to:

http://www.fhwa.dot.gov/environment/transportation_alternatives/

IDEA Program

TRB's Innovations Deserving Exploratory Analysis (IDEA) annual program announcement solicits funding proposals for the upcoming review cycles. The announcement explains the IDEA programs, describes the types of eligible projects and their funding structures, suggests general areas for which IDEA proposals can be submitted, and provides guidelines and forms for submitting proposals.

- The Transit IDEA program has one or more cycles each year.
- NCHRP IDEA cycles are twice each year.
- The Rail Safety IDEA program has one review cycle per year.

If the proposal submission due date for any IDEA program falls over a weekend or on a federal holiday, the due date automatically moves to the next business day.

The IDEA programs provide start-up funding for promising, but unproven, innovations in surface transportation systems. The programs' goals are to seek out and support new transportation solutions that are unlikely to be funded through traditional sources.

Top 3 Criteria by Which Selection Committees Evaluate IDEA Proposals:

1. **Innovation** -- Emphasize the innovation. Say it first, say it fast, and make it clear. What problem does your project address? How is your solution better than current

TRIBAL TRANSPORTATION FUNDING RESOURCES

practice?

2. **Benefits** -- Describe the expected benefits. Why is this project worth investing in?

3. **Science** -- Stick to the science. Be sure the research approach is sound and sensible

For more information go to:

[The IDEA Program](#)

FHWA

Strategic Highway Research Program (SHRP2)

The objective of the SHRP2 Education Connection is to incorporate SHRP2 products into collegiate level lesson plans and curricula. FHWA anticipates awarding up to 10 cooperative agreements to help professors and instructors bring state of the practice solutions to their classrooms.

Round 7 will open Spring 2016.

For more information go to:

<http://www.fhwa.dot.gov/goshrp2/>

Accelerated Innovation Deployment Demonstration (AID)

The final notice announces the availability of funding and requests grant applications for FHWA's Accelerated Innovation Deployment (AID) Demonstration authorized within the Technology and Innovation Deployment Program (TIDP) under the Moving Ahead for Progress in the 21st Century Act (MAP-21).

Consistent with other FHWA funding provided to tribes, federally recognized tribe identified on the list of "Indian Entities Recognized and Eligible to Receive Services from the Bureau of Indian Affairs" (published at 77 FR 47868) is eligible to apply for AID Demonstration.

All applications will be evaluated on a rolling basis and be assigned a rating of "Qualified" or "Not Qualified."

For more information go to:

<http://www.grants.gov/web/grants/view-opportunity.html?oppId=245654>

Department of Housing and Urban Development (HUD)

Indian Housing Block Grant Program (IHBG)

Funds appropriated by Congress for the Indian Housing Block Grant Program (IHBG) are made available to eligible grant recipients through a formula. Regulations governing the formula can be found at [24 CFR Part 1000, Subpart D](#). On April 20, 2007, the Native American Housing Assistance and Self Determination Final Rule was published revising the IHBG Formula.

In brief, the formula has two components; Need and Formula Current Assisted Stock. The Need component considers population, income, and housing conditions. The Formula Current Assisted Stock component reflects housing developed under the United States Housing Act (the predecessor of the IHBG program) which is owned and/or

operated by the IHBG recipient and provides funds for ongoing operation of the housing.

An Indian tribe may challenge the Need portion of the IHBG formula provided the data are gathered, evaluated, and presented in a manner that is fair and equitable for all participating tribes. Tribes have until March 30 of each year to submit challenges to their Needs data in consideration for the upcoming fiscal year.

For more information go to:

http://portal.hud.gov/hudportal/HUD?src=/program_offices/public_indian_housing/ih/codetalk/onap/ihbgformula

Department of Health and Human Services

NICHD Consortium for Research on Pediatric Trauma and Injury Prevention (R24).

The purpose of this funding opportunity announcement (FOA) is to encourage multidisciplinary collaborations to target gaps in research on pediatric trauma and injury prevention. The team science approach encouraged by this FOA could be used to generate a research resource, which may include discovery-based or hypothesis-generative approaches, to advance the relevant area of biomedical research or to devise breakthrough ideas, concepts and approaches to therapies in pediatric trauma and injury prevention research.

Deadline to apply: January 7, 2017

To view the announcement go to:

<http://www.grants.gov/web/grants/view-opportunity.html?oppId=261949>



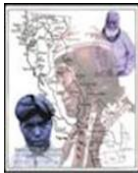


NATIONAL INDIAN JUSTICE CENTER

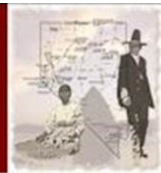
5250 Aero Drive
Santa Rosa, CA 95403
Phone: (707) 579-5507
Fax: (707) 579-9019
Email: nijc@aol.com
Http://www.nijc.org

NIJC SERVICES

The National Indian Justice Center (NIJC) provides a range of services, including regional and local training sessions under contracts with tribes, court evaluation and court planning services, and other resource services.



Western Tribal Transportation Training and Technical Assistance Program



National Tribal Transportation Conference



Save the date!

October 3 – 6, 2016
Anaheim, California



WESTERN TTAP

For more details, please contact Western TTAP Coordinators

(707) 579-5507

Barry Litchfield, x 224

Email: barry@nijc.org

Margaret Browne, x 225

Email: tcoord@nijc.org